



# CosmoPAGE SDS Gels

## Pre-cast SDS-PAGE gels



*Next Generation*

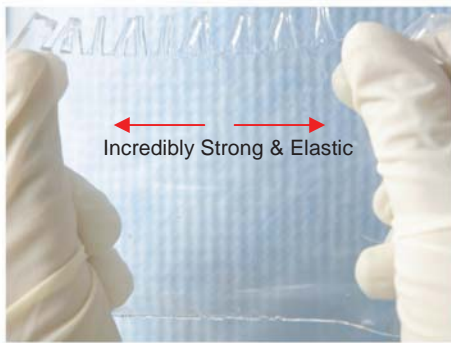
- *No Tearing*
- *No Cracking*
- *Superior Resolution*
- *Two-Year Shelf Life*

# CosmoPAGE SDS Gels

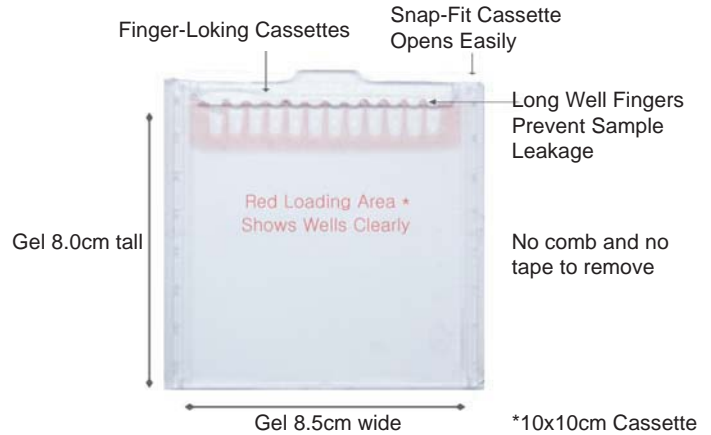
## INTRODUCTION

The CosmoPAGE pre-cast SDS-PAGE gel is ideal for protein electrophoresis. The unique formulation of polyacrylamide provides the best resolution, most strength, best transfer efficiency, and longest shelf life. Product line has gels available in 1-well, 12-well and 17-well formats for high-throughput protein electrophoresis. CosmoPAGE SDS Gel is also available for 2D electrophoresis.

**No Tearing** : No worry of tearing of gel when handling



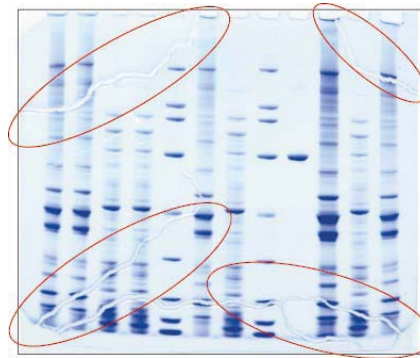
**Gel Size** : fit into the **CosmoPAGE Dual Run & Blot unit (NU00002)** and all **Invitrogen XCell units**



**No Cracking** : No worry of cracking of gel when drying

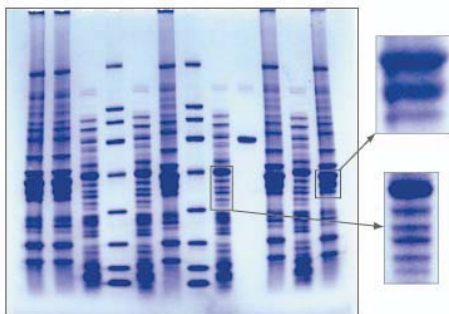


CosmoPAGE dried 12% SDS

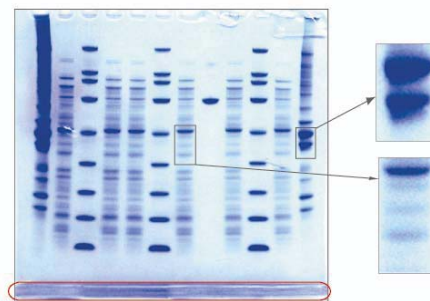


Competitor 4-12% MOPS  
(Gel shrinks in alcohol)

**Superior Resolution** : Unambiguous protein band detection



CosmoPAGE 4-20% SDS



Competitor 4-12% MES

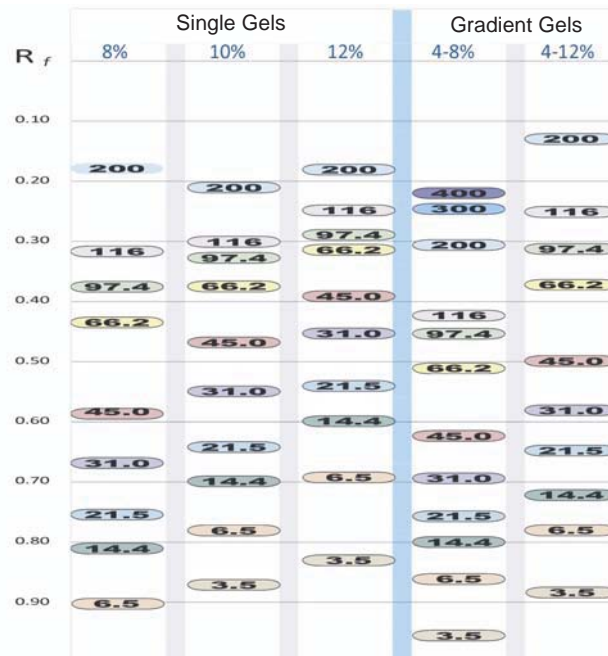
Note: "Foot" from side slot must be cut off to blot or dry gel

## Gel Selection-1, SDS-Std. Run Buffer



\*Shaded area indicates gel percentages recommended for optimized resolution

## Gel Selection-2, SDS-Low Range Run Buffer



\*Note: CosmoPAGE SDS Gels require CosmoPAGE LDS Sample Buffer and CosmoPAGE SDS Run Buffer

## ORDERING INFORMATION

CosmoPAGE SDS Gels : Two-year shelf life

| Product                          | Cat.No. | Storage | Quantity  | Price(US\$) |
|----------------------------------|---------|---------|-----------|-------------|
| CosmoPAGE SDS Gel 8% 12 well     | NU00812 | 4° C    | 10 pieces | 100         |
| CosmoPAGE SDS Gel 8% 17 well     | NU00827 | 4° C    | 10 pieces | 100         |
| CosmoPAGE SDS Gel 10% 1 well     | NU01001 | 4° C    | 10 pieces | 100         |
| CosmoPAGE SDS Gel 10% 12 well    | NU01012 | 4° C    | 10 pieces | 100         |
| CosmoPAGE SDS Gel 10% 17 well    | NU01027 | 4° C    | 10 pieces | 100         |
| CosmoPAGE SDS Gel 12% 1 well     | NU01201 | 4° C    | 10 pieces | 100         |
| CosmoPAGE SDS Gel 12% 12 well    | NU01212 | 4° C    | 10 pieces | 100         |
| CosmoPAGE SDS Gel 12% 17 well    | NU01227 | 4° C    | 10 pieces | 100         |
| CosmoPAGE SDS Gel 16% 12 well    | NU01612 | 4° C    | 10 pieces | 100         |
| CosmoPAGE SDS Gel 16% 17 well    | NU01627 | 4° C    | 10 pieces | 100         |
| CosmoPAGE SDS Gel 20% 12 well    | NU02012 | 4° C    | 10 pieces | 120         |
| CosmoPAGE SDS Gel 20% 17 well    | NU02027 | 4° C    | 10 pieces | 120         |
| CosmoPAGE SDS Gel 4-8% 12 well   | NU40812 | 4° C    | 10 pieces | 100         |
| CosmoPAGE SDS Gel 4-8% 17 well   | NU40827 | 4° C    | 10 pieces | 100         |
| CosmoPAGE SDS Gel 4-12% 12 well  | NU41212 | 4° C    | 10 pieces | 100         |
| CosmoPAGE SDS Gel 4-12% 17 well  | NU41227 | 4° C    | 10 pieces | 100         |
| CosmoPAGE SDS Gel 4-20% 2D well  | NU42002 | 4° C    | 10 pieces | 100         |
| CosmoPAGE SDS Gel 4-20% 12 well  | NU42012 | 4° C    | 10 pieces | 100         |
| CosmoPAGE SDS Gel 4-20% 17 well  | NU42027 | 4° C    | 10 pieces | 100         |
| CosmoPAGE SDS Gel 10-20% 12 well | NU82012 | 4° C    | 10 pieces | 100         |
| CosmoPAGE SDS Gel 10-20% 17 well | NU82027 | 4° C    | 10 pieces | 100         |

### Buffers

| Product   | Cat.No. | Storage  | Quantity | Price(US\$) |
|---|---------|----------|----------|-------------|
| DTT Reducer (10x)   | NU32001 | 4° C     | 1 ml     | 8           |
| LDS Sample Buffer (4x)  | NU31002 | 10-25° C | 2 ml     | 6           |
| LDS Sample Buffer (4x)  | NU31010 | 10-25° C | 10 ml    | 12          |
| SDS-Std. Run Buffer (20x)   | NU50050 | 10-25° C | 50 ml    | 8           |
| SDS-Std. Run Buffer (20x)   | NU50500 | 10-25° C | 500 ml   | 55          |
| SDS-Low Range Run Buffer (20x)  | NU13050 | 10-25° C | 50 ml    | 8           |
| SDS-Low Range Run Buffer (20x)  | NU13500 | 10-25° C | 500 ml   | 55          |
| TGS Transfer Buffer (10x/20x)   | NU82500 | 10-25° C | 500 ml   | 19          |
| SDS Buffer Sampler Kit<br>DTT Reducer (10x) -- 0.2 ml<br>LDS Sample Buffer (4x) -- 0.5 ml<br>SDS-Std. Run Buffer (20x) -- 50 ml | NU90002 | 4° C     | 1 kit    | 18          |

### System

| Product                | Cat.No. | Storage    | Quantity | Price(US\$) |
|------------------------|---------|------------|----------|-------------|
| Dual Run & Blot System | NU00002 | Room Temp. | 1 unit   | 495         |