

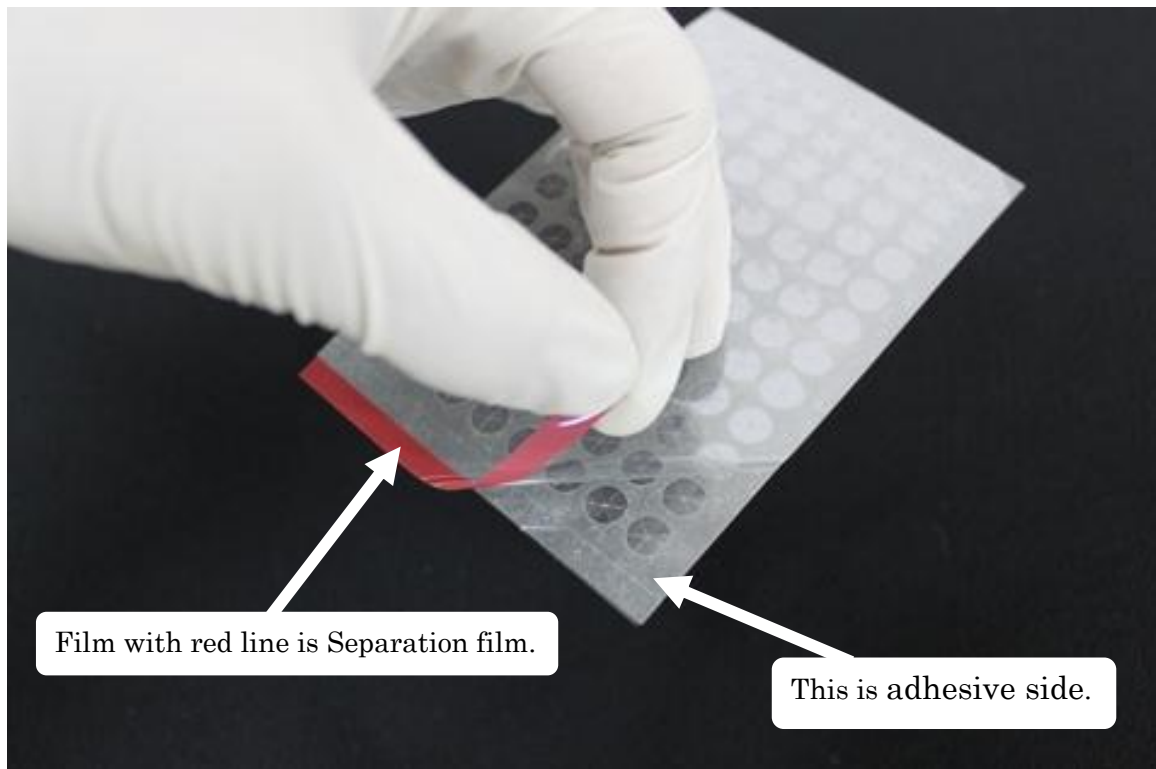
RAPID Slit Seal Setup Guide

Read this guide before you use RAPID Slit Seal.

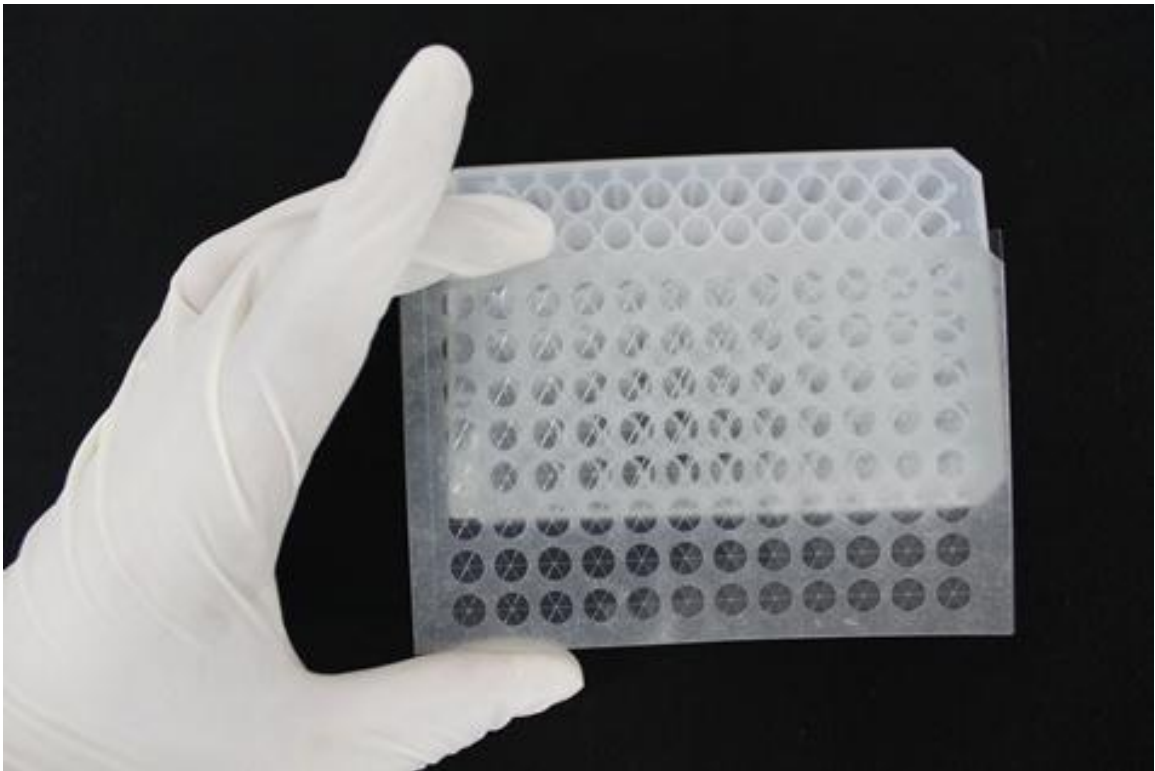
RAPID Slit Seal consists of three films such as Protection film, Cross slit film and Separation film as shown in figure below.

Protection film: Film with a precut corner
RAPID Slit Seal: Film with cross slit lines
Separation film: Film with a red straight line

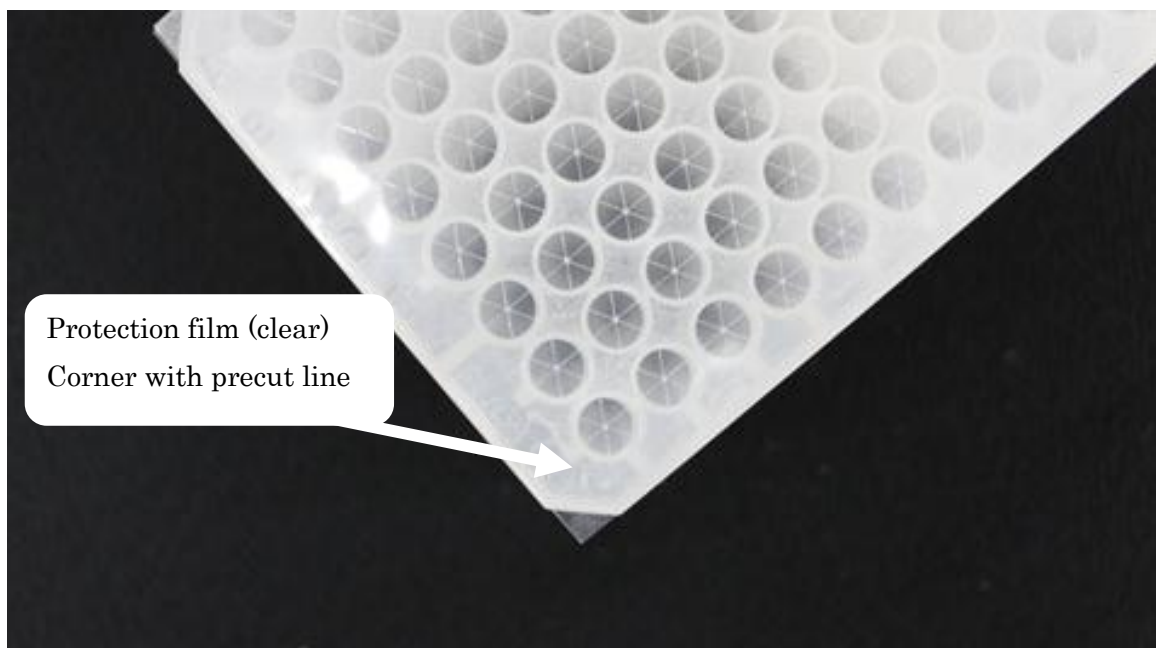
1. Peel the separation film with a red line off to expose the adhesive side of RAPID Slit seal.



2. Seal the RAPID Slit seal to the surface of a 96-well plate correctly by adjusting well positions.



3. Remove the protection film before sampling or injection by peeling it off from the corner with precut line. Otherwise, injection needles and tips cannot penetrate into wells.





4. Complete sealing!

