

Signal Enhancer HIKARI for Immunostain

INTRODUCTION

Signal Enhancer HIKARI for Immunostain was developed to resolve the problems of low sensitivity and high background often encountered during immunostain procedures such as immunohistochemistry (IHC) and immunocytochemistry. Dilute your antibodies with Signal Enhancer HIKARI for Immunostain instead of conventional diluents such as PBS or TBS before performing your next IHC experiment and witness a remarkable increase in the ability to detect the protein of interest and to eliminate unwanted background.

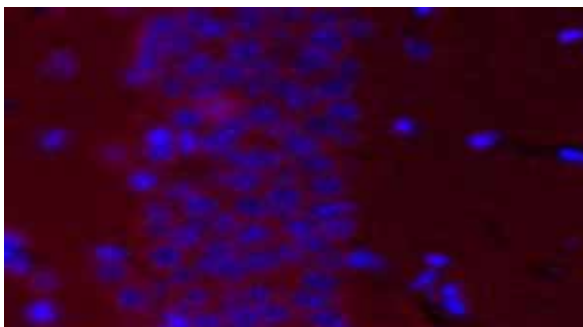
- **Enhances signals** – yields several fold increase in signal intensity
- **Reduces background** – improves the specificity of your antibodies
- **Ready-to-use reagent** – just dilutes your antibodies with Signal Enhancer HIKARI for Immunostain
- **Works with any system** – applicable to colorimetric, chemiluminescent and fluorescent detection

*The kit can also be used in combination with sensitizing systems such as the ABC or polymer complex method.

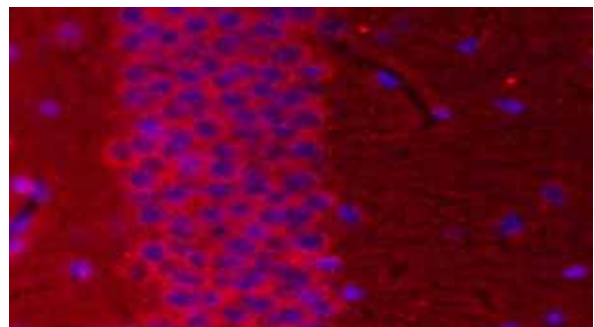
APPLICATION DATA

Brain tissue section was stained with secondary antibody conjugated with AF555 (red) and counter stained with Hoechst dye (blue).

Conventional Buffer



Signal Enhancer HIKARI for Immunostain



*Data courtesy of Dr. R. Ishimura,
The Jackson Laboratory*

ORDERING INFORMATION

Item Name	Storage	Cat. No.	Qty	Price
Signal Enhancer HIKARI for Immunostain Starter Kit (Solution A & Solution B)	4	NU00201	5 ml each	\$130
Signal Enhancer HIKARI for Immunostain Solution A	4	NU00202	20 ml	\$320
Signal Enhancer HIKARI for Immunostain Solution B	4	NU00203	20 ml	\$320

Note: Signal Enhancer HIKARI for Immunostain Solution A and B exhibit different enhancing effects, depending on antigens and antibodies. These solutions can be used independently. However, both solutions should be explored in order to select the more suitable one for your particular assay system. A Starter Kit [NU00201] composed of both Solution A and B is available for such purpose