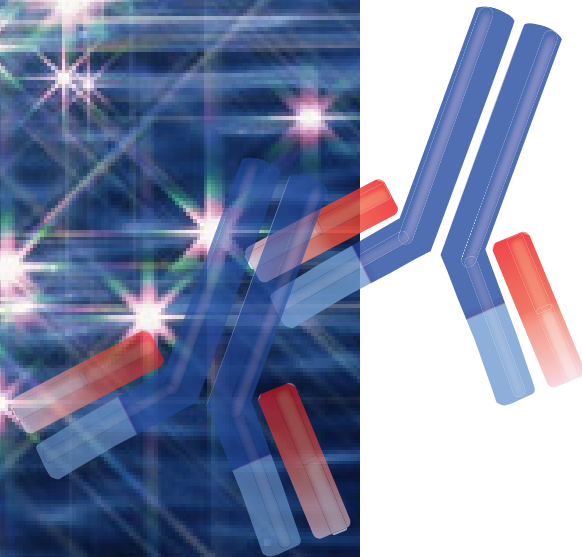




Signal Enhancer

HIKARI



SIGNAL ENHANCER HIKARI

INTRODUCTION

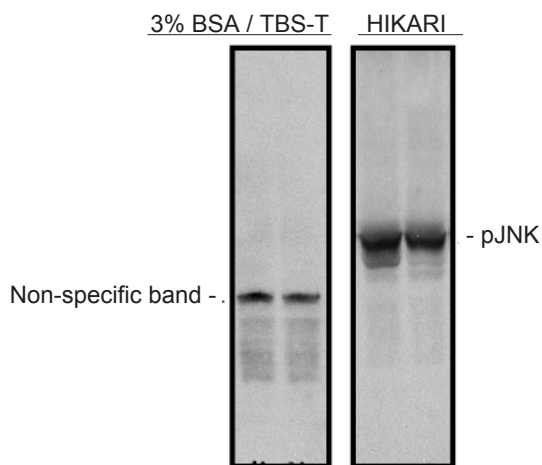
Dilute your antibodies with Signal Enhancer HIKARI instead of conventional diluents such as PBS or TBS before performing your next Western blot detection protocol and witness a remarkable increase in the ability to detect the protein of interest and to eliminate undesired background.

Signal Enhancer HIKARI was developed to resolve the problems of low sensitivity and high background often encountered during procedures such as Western blotting and ELISA.

- **Enhances antigen-antibody reactions** – yields several 10-fold increase in signal intensity
- **Removes background** – improves the specificity of your antibodies
- **Works with any substrate** – enhances both chemiluminescence and colorimetric detection
- **Works with any membrane** – enhances signal from nitrocellulose and PVDF membrane
- **Ready-to-use reagent** – Just dilutes your antibodies with Signal Enhancer HIKARI

Detection of pJNK by Western Blotting

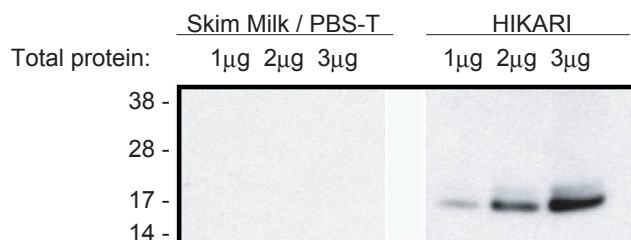
Primary Ab : Anti-pJNK (1:1,000)
Secondary Ab : Anti-Rabbit IgG-HRP (1:5,000)
Sample : Mouse Embryonic Fibroblast
Reagent for detection : SuperSignal West Pico



Data courtesy of Dr. S. Matsuzawa,
Signal Transduction, NCI Cancer Center, Burnham Institute
for Medical Research

Detection of Rac1 by Western Blotting

Primary Ab : Anti-Rac1 (1:1,000)
Secondary Ab : Anti-Mouse IgG-HRP (1:2,500)
Sample : Rat Cortical primary neuron
Reagent for detection : ECL



Data courtesy of Dr. K. Ishizuka,
Department of Psychiatry, Johns Hopkins University
School of Medicine

ORDERING INFORMATION

Item Name	Component	Storage	Cat. No.	Qty	Price
Signal Enhancer HIKARI 50	Solution 1* 50ml	4°C	NU00101	1 Kit	\$98
	Solution 2** 50ml				
Signal Enhancer HIKARI 250	Solution 1* 250ml	4°C	NU00102	1 Kit	\$280
	Solution 2** 250ml				

* Solution 1 for Primary Antibody

** Solution 2 for Secondary Antibody