



# ***WEST-Easy***

***Western Blotting Detection System***



***Spray Type***

# WEST-Easy Western Blotting Detection System

## INTRODUCTION

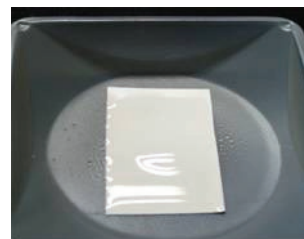
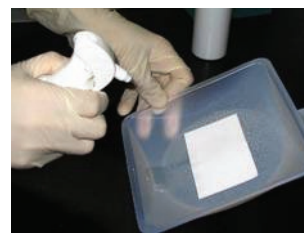
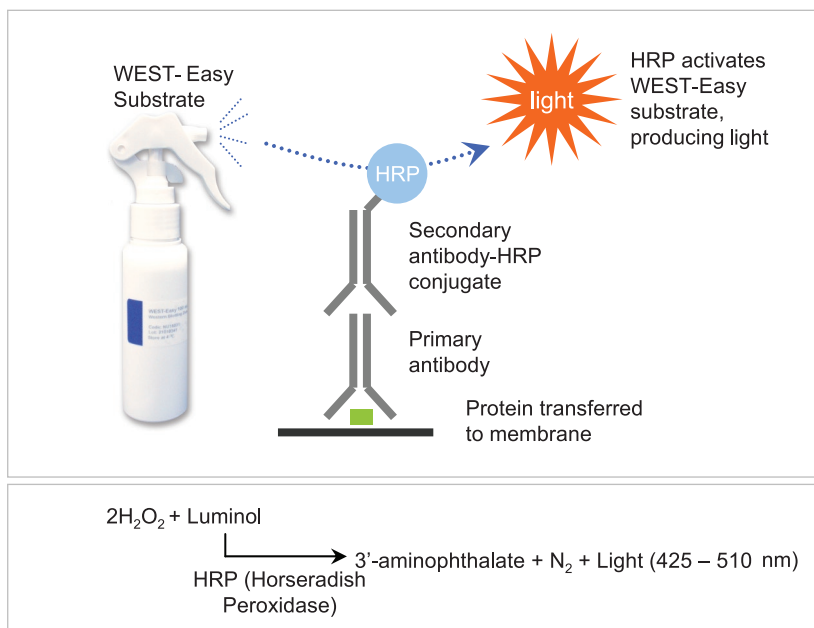
WEST-Easy Western Blotting Detection System is a light emitting non-radioactive method for detection of immobilized specific antigens in chemiluminescent Western blots through horseradish peroxidase (HRP) labeled antibodies. Conventional Western blotting detection systems typically consist of two bottles, one for chemiluminescent substrate solution and one for enhancer solution. The WEST-Easy system combines both chemiluminescent substrate solution and enhancer solution in one spray bottle. There is no mixing of solutions required.

**Convenient** – Just spray, no need to mix substrate solution and enhancer solution

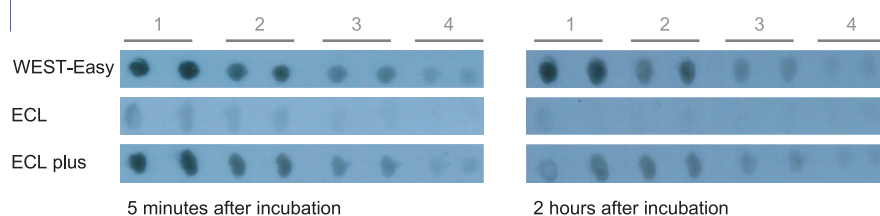
**High sensitivity** – Up to 1-2 µg of antigen on membrane can be detected

**Long signal** – Strong light emission lasts up to 2 hours

## Schematic of WEST-Easy



## Sensitivity and Signal Duration Test



BSA was used as the antigen (50ng)  
Blots were exposed to film for one minute

Lane 1: 1/8000 diluted 2<sup>nd</sup> Antibody  
Lane 2: 1/16000 diluted 2<sup>nd</sup> Antibody  
Lane 3: 1/32000 diluted 2<sup>nd</sup> Antibody  
Lane 4: 1/64000 diluted 2<sup>nd</sup> Antibody

## ORDERING INFORMATION

Item Name	Cat. No.	Storage	Qty	Price
WEST-Easy	NU16031	4° C	100 ml*	\$120

\* 2000 cm<sup>2</sup> of membrane