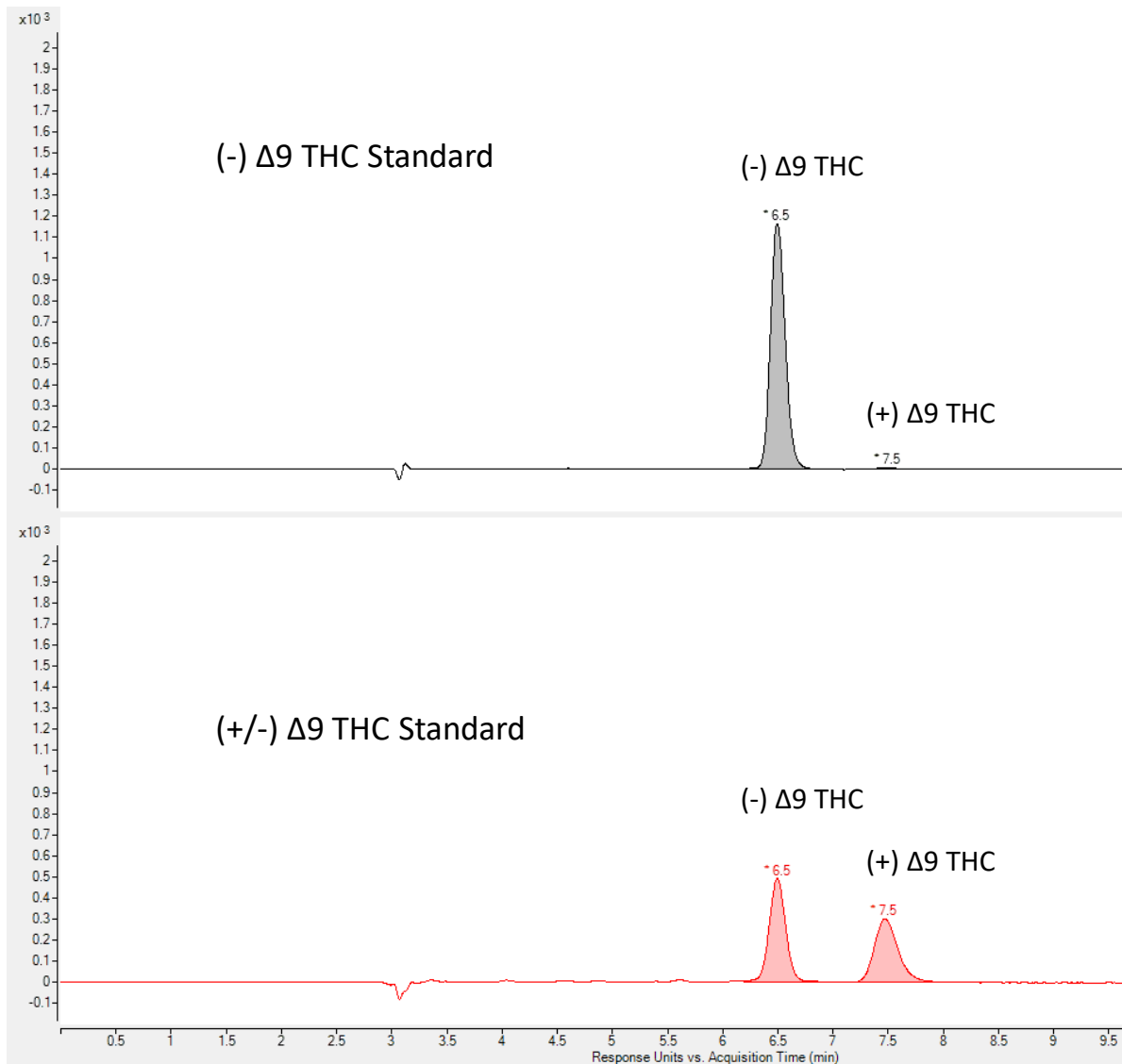


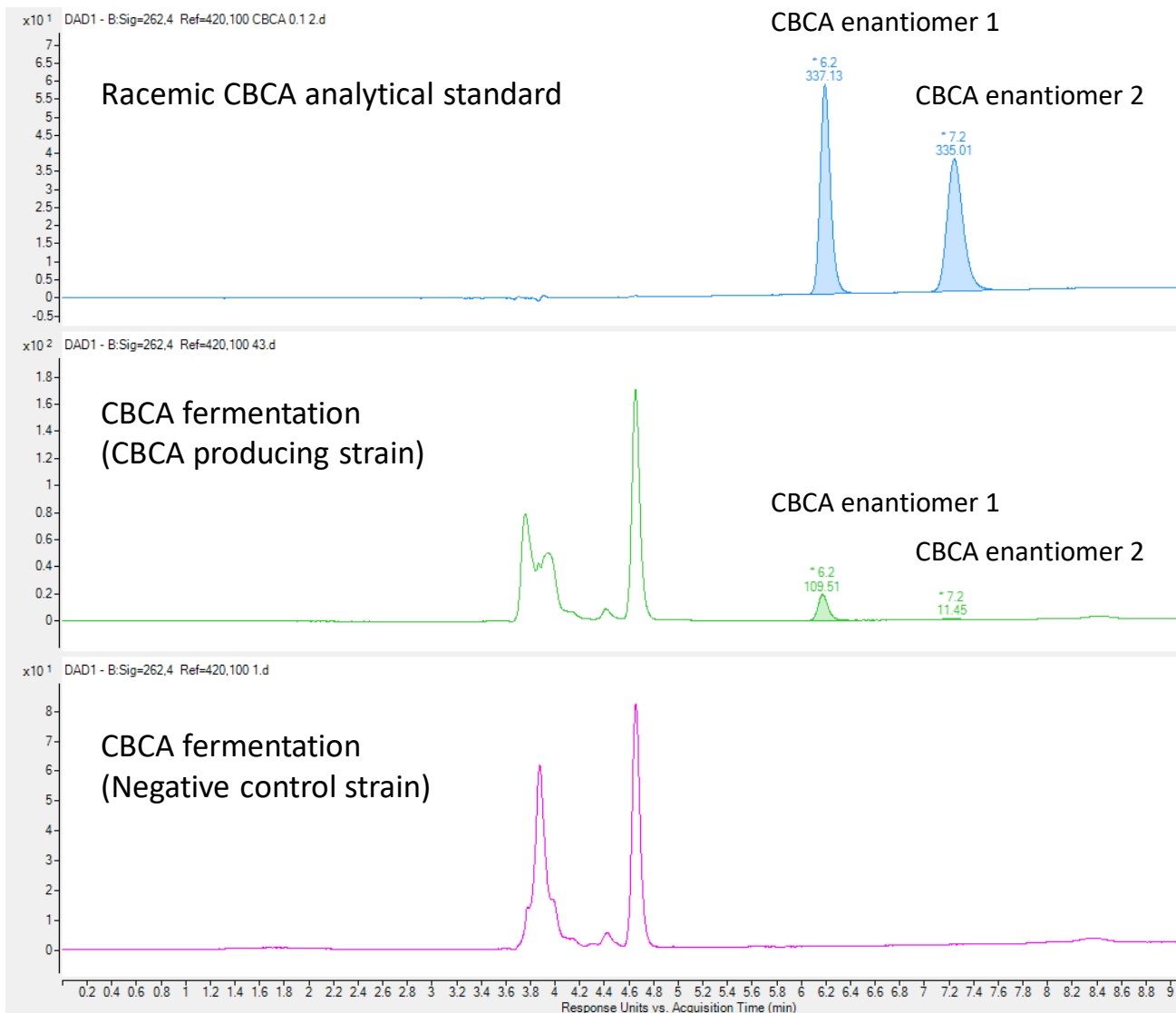
COSMOSIL Application Data

delta-9-Tetrahydrocannabinol (Δ 9-THC) Enantiomers



Condition

Column: COSMOSIL CHIRAL 5A (4.6 mm I.D. x 250 mm)
Mobile Phase: A: 0.1% formic acid in Water B: 0.1% formic acid in Acetonitrile
Gradient: 75% B isocratic
Flow rate: 1.0 mL/min
Oven: 40 Celsius
Injection: 5 μ L
Detection: UV 210 nm



Condition

Column: COSMOSIL CHIRAL 5A (4.6 mm I.D. x 250 mm)
 Mobile Phase: A: 0.1% formic acid in Water B: 0.1% formic acid in Acetonitrile
 Gradient: 80-90% B from 0-4 min, 90% B for 1 min, re-equilibrate at 80% B for 4 min
 Flow rate: 0.8 mL/min
 Oven: 40 Celsius
 Injection: 5 µL
 Detection: UV 262 nm

Notes

CBCA enantiomer resolution of 4.51
 $R = (T_{R2} - T_{R1}) / (0.5(W_1 + W_2))$