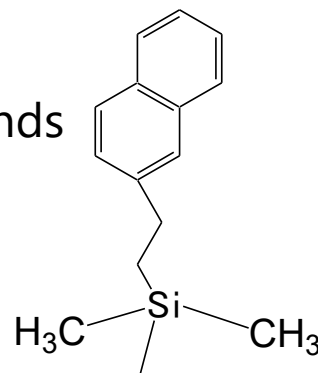


# COSMOSIL $\pi$ NAP

## Stronger $\pi$ - $\pi$ Interactions New Stationary Phase for Unsaturated Compounds

COSMOSIL  $\pi$ NAP is a reversed phase HPLC column with naphthylethyl group bonded silica packing material. The naphthylethyl group is composed of two fused aromatic rings and forms strong  $\pi$ - $\pi$  interactions with unsaturated compounds. This column offers improved selectivity for structural isomers that exhibit differences in saturation.

- Naphthylethyl Group Bonded
- Excellent Selectivity Unsaturated Compounds
- Enhanced  $\pi$ - $\pi$  Interactions

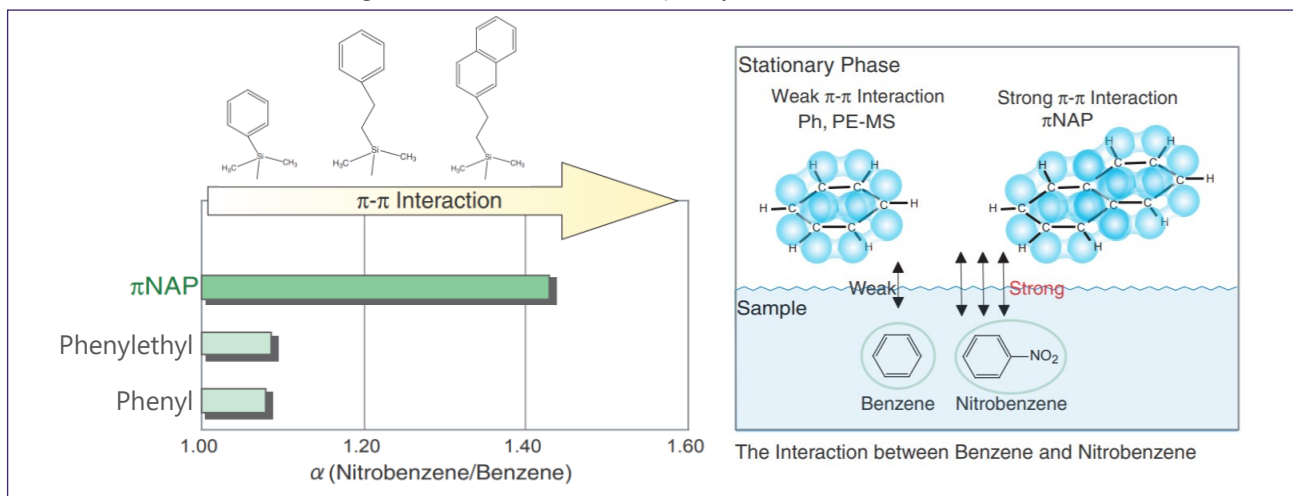


## Physical characteristics

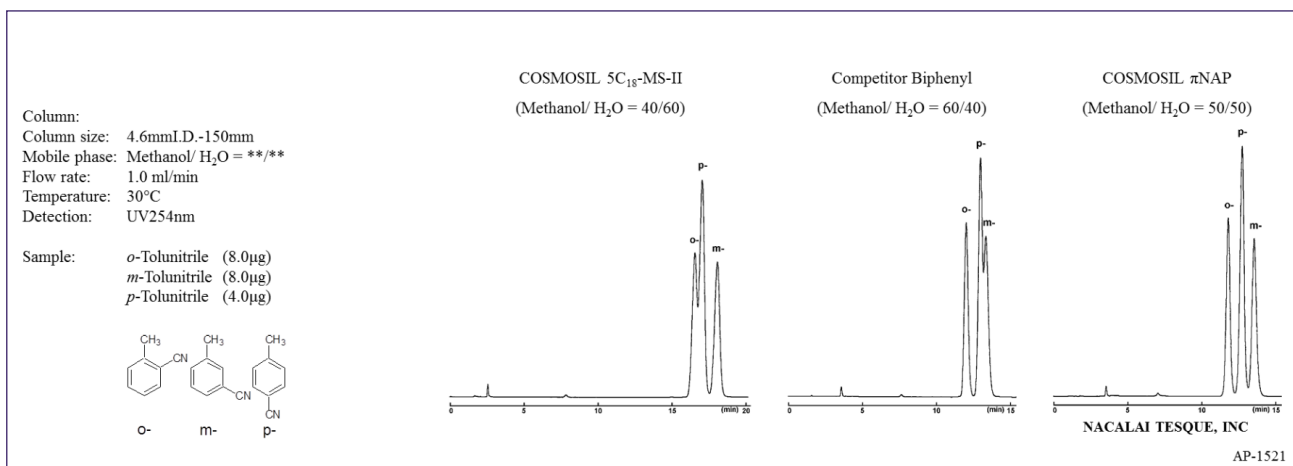
COSMOCORE $\pi$ NAP		
Silica Gel	High Purity Porous Spherical Silica	
Average Particle Size	2.5 $\mu\text{m}$	3 $\mu\text{m}$ , 5 $\mu\text{m}$
Average Pore Size	13 nm	12 nm
Specific Surface Area	330 $\text{m}^2/\text{g}$	300 $\text{m}^2/\text{g}$
Stationary Phase	Naphtylethyl Group	
Bonding Type	Monomeric	
End-capping	Near-perfect Treatment	
pH range	2 – 7.5	

## Stronger $\pi$ - $\pi$ interactions

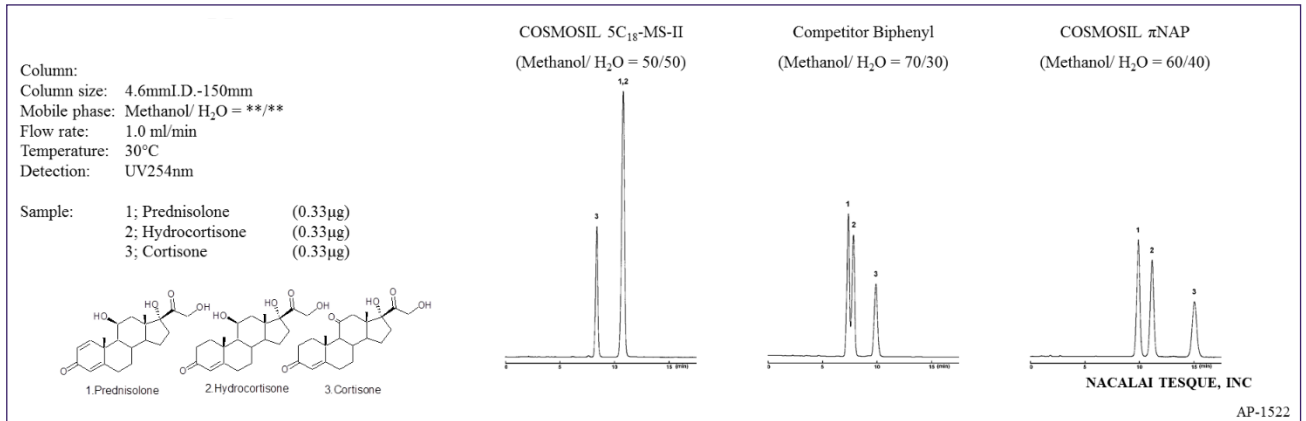
COSMOSIL  $\pi$ NAP shows stronger  $\pi$ - $\pi$  interactions than phenyl columns.



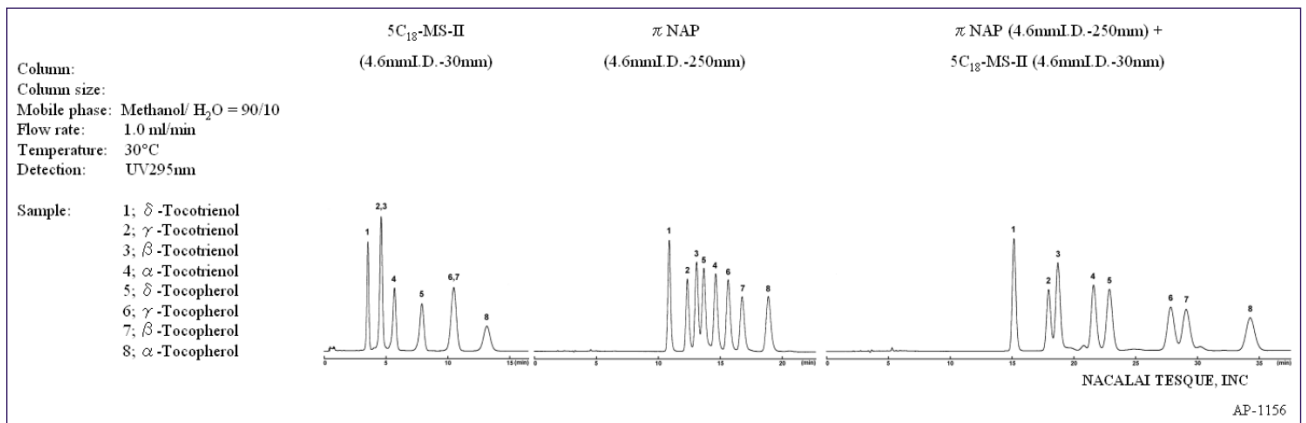
## Tolunitrile isomers



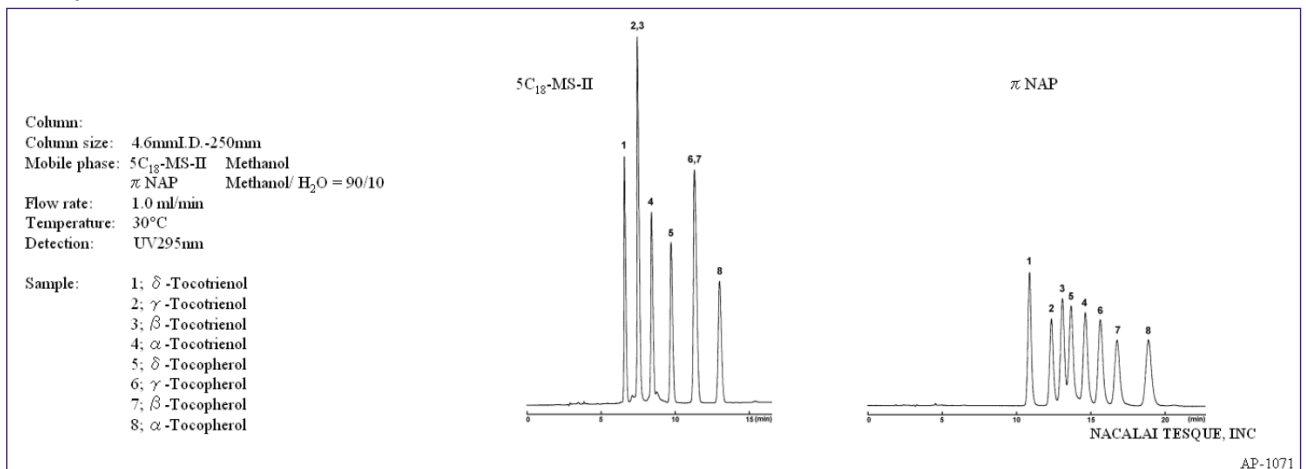
## Steroids (Adrenal cortical hormones)



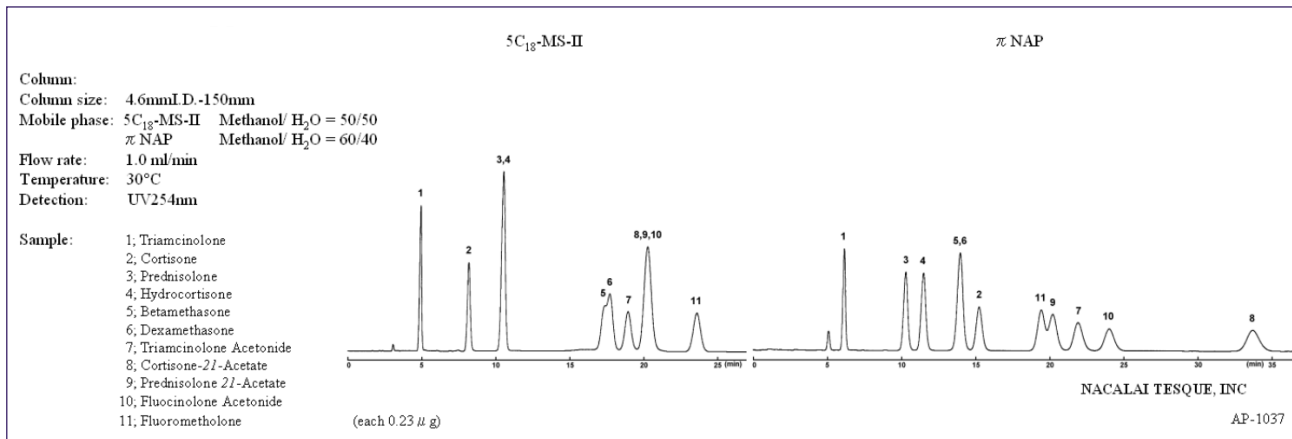
## Vitamin E (Tocotorienols)



## Tocopherols

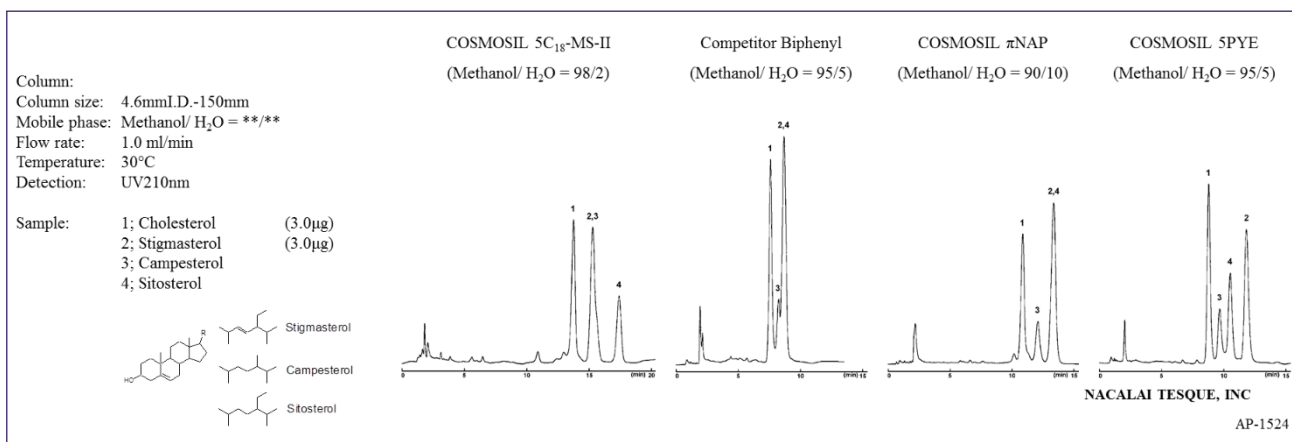


## Adrenal cortical hormones



## Further separation

COSMOSIL PYE is a packed column with pyrene bonded silica packing material. It has stronger  $\pi$ - $\pi$  interaction than  $\pi$ NAP since pyrene has four aromatic rings.



## Ordering information

For more information, please visit our website by scanning the QR code below.



COSMOSIL  $\pi$ NAP



COSMOSIL PYE



COSMOSIL Cholester  
 COSMOCORE Cholester



COSMOSIL Application  
 (HPLC / UHPLC / SFC)

