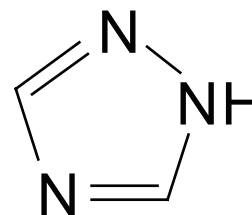


Melamine - COSMOSIL HILIC

Melamine analysis by HPLC and LC/MS/MS using COSMOSIL HILIC

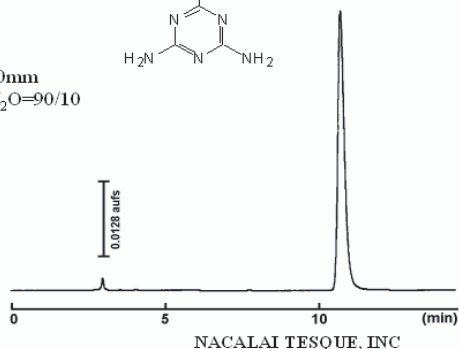
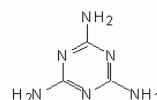
	HILIC
Silica Gel	High Purity Porous Spherical Silica
Average Particle Size	5 μm
Average Pore Size	approx. 120 \AA
Specific Surface Area	approx. 300 m^2/g
Stationary Phase	Triazole
Main Interaction	Hydrophilic Interaction Anion-exchange



■ HPLC

COSMOSIL Chromatogram Index

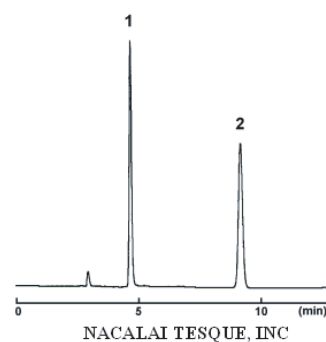
Sample: Melamine
 CAS No.: [108-78-1]
 Molecular formula: $\text{C}_3\text{H}_3\text{N}_3$
 Column: HILIC
 Column size: 4.6mm I.D. -250mm
 Mobile phase: Acetonitrile/ H_2O =90/10
 Flow rate: 1.0 ml/min
 Temperature: 30°C
 Detection: UV240 nm
 Attenuation: 0.128 au/fs
 Sample conc.: 1.0mg/ml
 Injection volume: 1.0 μl
 Retention time: 10.79min
 Capacity factor: 2.79



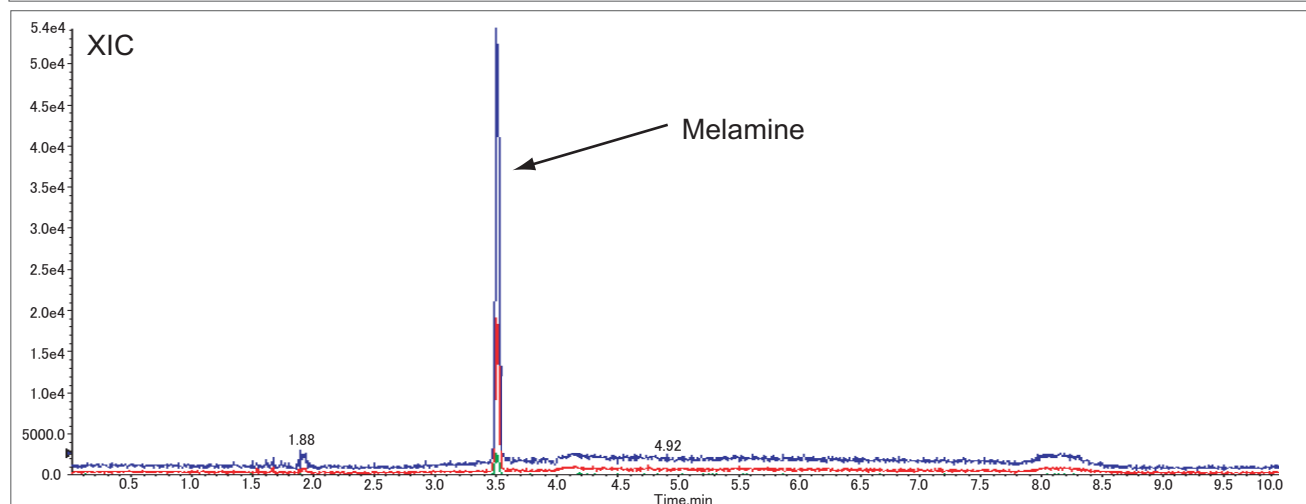
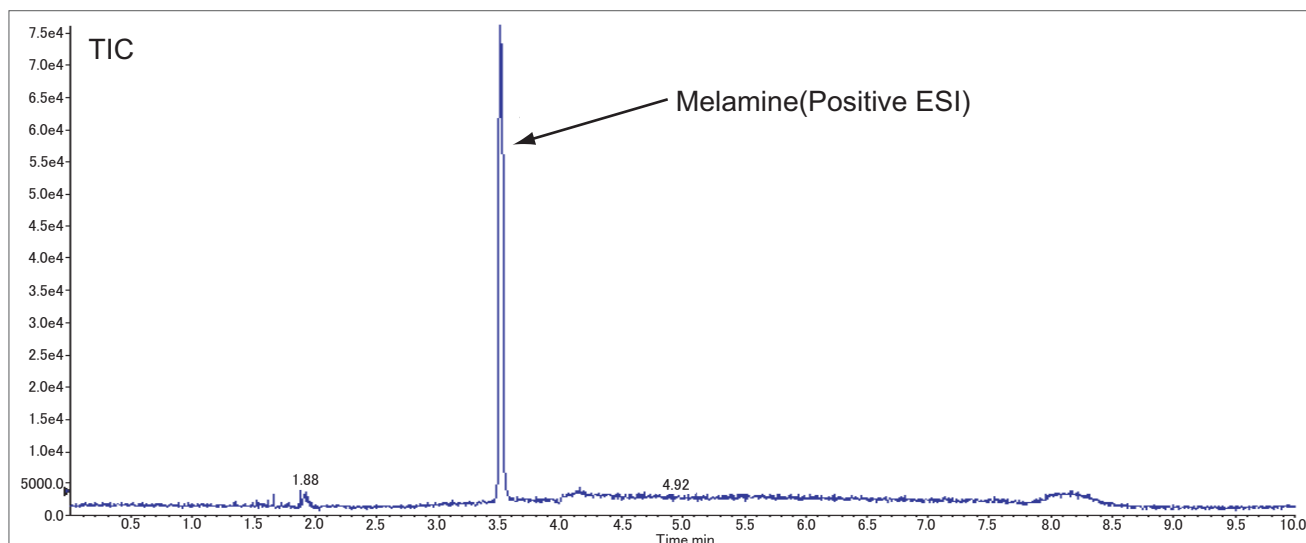
COSMOSIL Application Data

Column: HILIC
 Column size: 4.6mm I.D. -250mm
 Mobile phase: Acetonitrile/ 10mmol/l
 Ammonium Acetate = 70/30
 Flow rate: 1.0 ml/min
 Temperature: 30°C
 Detection: UV225nm

Sample: 1; Melamine (0.1 μg)
 2; Cyanuric Acid (1.0 μg)



■ LC-MS/MS



Column COSMOSIL HILIC
 Column Size 2.0 mm I.D.x 150mm
 Mobile Phase A: Acetonitrile + 10 mmol/l Ammonium acetate
 B: Water + 10 mmol/l Ammonium acetate

Temperature 40°C
 Detection MRM (ESI-POS)

Q1	Q2
127	85
127	68
127	60

Gradient

Time (min)	Flow rate (µl/min)	A (%)	B (%)
int	250	97	3
5	250	20	80
5.5	250	3	97
5.6	250	97	3
10	250	97	3

Sample Volume Melamine
 (10 ppb / 10 µl / inj)

LC/MS/MS data is provided by customer.

For research use only, not intended for diagnostic or drug use.

