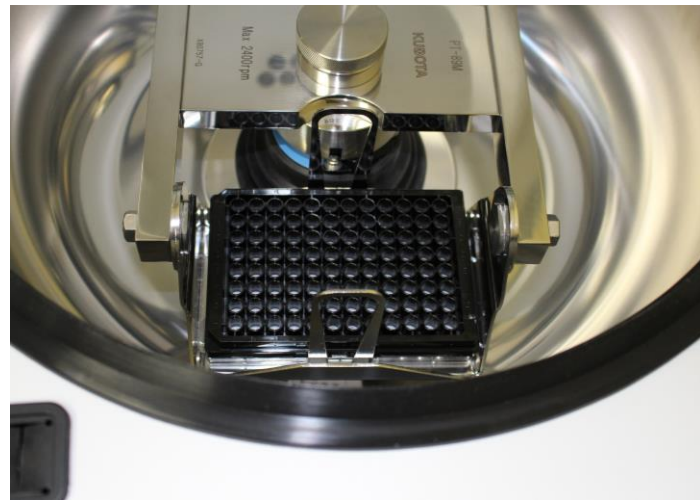


Shorter time
and easier!!

CSCRIE Centrifugal filtration plate (for 96 and 384 well)



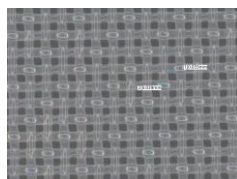
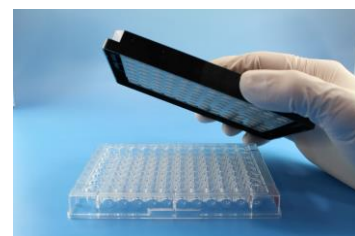
Product name : CSCRIE Centrifugal filtration plate (for 96 and 384well)

Features : For flow cytometer users, this is a mesh-equipped microplate in which specimens are dispensed by multichannel pipette, automatic dispenser, etc. with stacked on another microplate, then filtrated at one time by centrifuge. This is convenient for those who want to operate more easily and with less time.

Mesh size : 30 μm , 70 μm , 100 μm

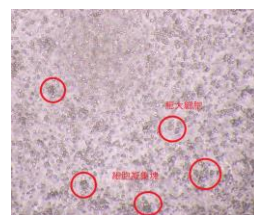
Standard : Compatible with 96 and 384 well plate

Materials : plate: polystyrene, mesh: polyester fiber, adhesive: silicone

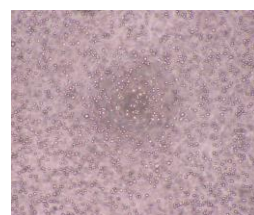


High homogeneous
mesh pore

Comparison before and after
cell filtration
* HEK293 cell use

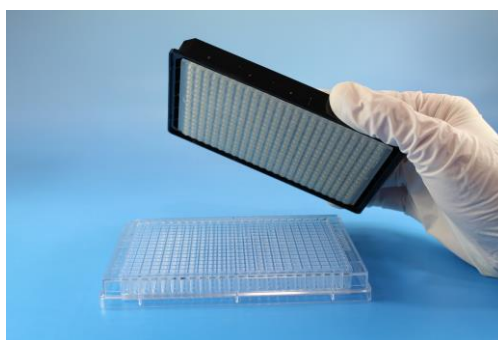


< Before >



< After >

384 well type!!



Applicable to high throughput with automatic dispenser

Performance evaluation for 96 well centrifugal filtration plate

Evaluation method

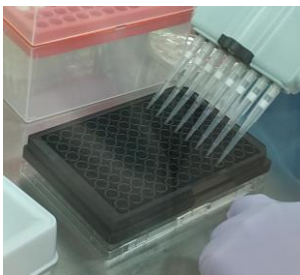
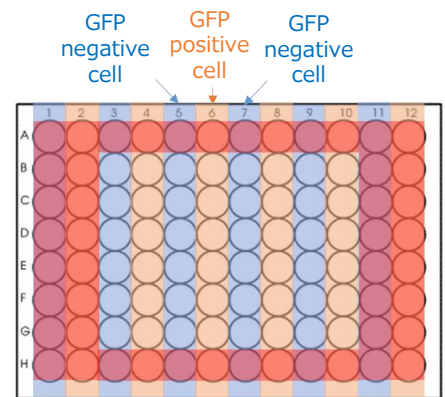
Stack centrifugal filtration plate on conventional 96 well round bottom plate, then cell filtration by centrifuge.

Evaluation point: Presence or absence of contamination after centrifugation

HEK293T (human fetal kidney epithelial cells) without expressing GFP and HEK293T with expressing GFP are filtrated in adjacent wells and judged the presence or absence of contamination by flow cytometry.

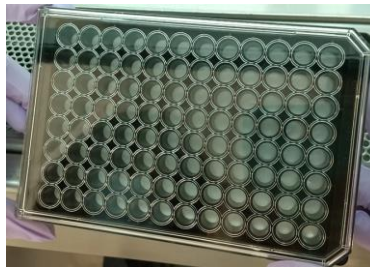
Operation

- ① Peel cells with trypsin/EDTA and centrifuge
 - ② Wash cells with PBS
 - ③ Dilute cells with PBS to about 2×10^4 cells/200 uL
 - ④ Add PI to final concentration of 0.25 ug/mL
 - ⑤ Stack centrifugal filtration plate on 96 well plate
 - ⑥ Dispense cells with 200 uL each to wells
 - ⑦ Centrifuge the plate at 300 g for 30 seconds
 - ⑧ Measure by flow cytometer (Guava easyCyte 8HT)
- *Measured only within the red frame

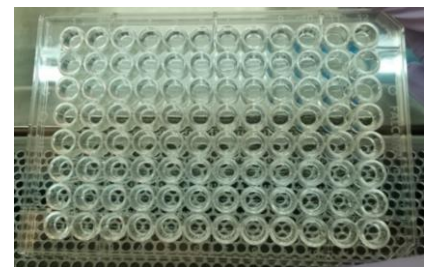


Dispensing cells in the plate

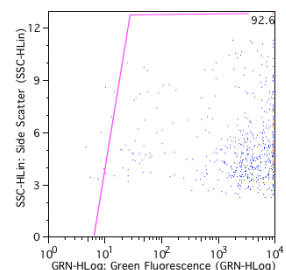
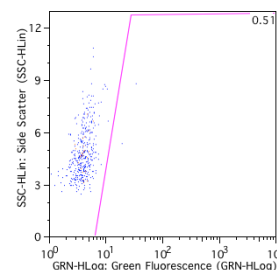
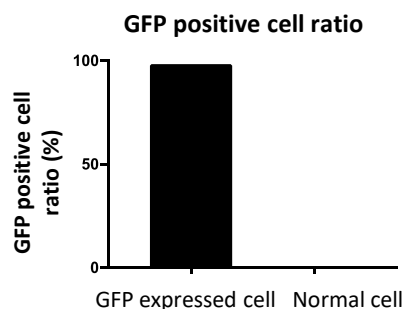
Centrifugal filtration plate & 96 well plate after centrifugation



No observation of cell suspension



Evaluation result



1. According to the above graphs, no observation of contamination in the adjacent wells.
2. All cell suspension fell to the 96 well plate with centrifugation at 300 g for 30 seconds.