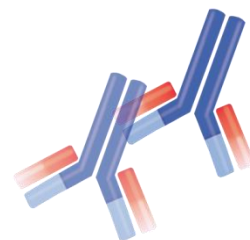


Epitope Tag Antibodies

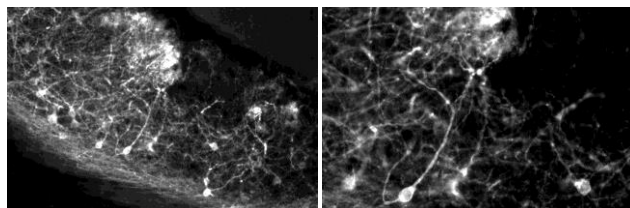
Nacalai USA, Inc. carries a family of epitope tag antibodies for the detection and purification of the recombinant proteins. Most of Nacalai's tag antibodies are highly specific mouse monoclonal antibodies.



Anti-GFP(Rat IgG2a), Mono (GF090R)

Clone : GF090R
Isotype : IgG2a (Rat)
Product form : Liquid
Immunogen : His-GFP (full length) fusion protein
Application : Immunohistochemistry 1:1000-1:2000
Western Blotting 1:1000-1:2000
ELISA 1:2000-1:20000

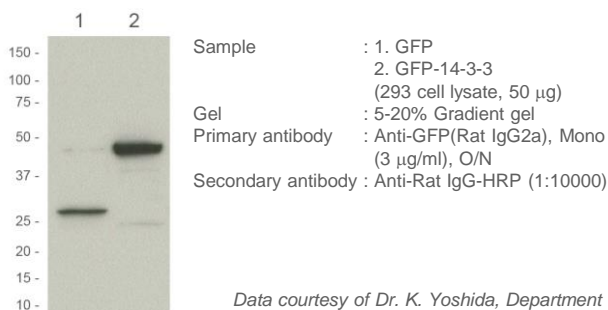
Immunohistochemistry



Sample : Mouse brain (nerve cell)
Primary antibody : Anti-GFP(Rat IgG2a), Mono (1:1000) RT, O/N
Secondary antibody : Anti-Rat IgG-Cy3 (1:300) RT, 1 hr
Blocking : 5% Normal goat serum/0.2% TritonX-100 in PBS
Fixing method : 4% Paraformaldehyde

Data courtesy of Dr. Y. Yoshihara, RIKEN Brain Science Institute

Western Blotting



Data courtesy of Dr. K. Yoshida, Department of Molecular Genetics, Medical Research Institute, Tokyo Medical and Dental University

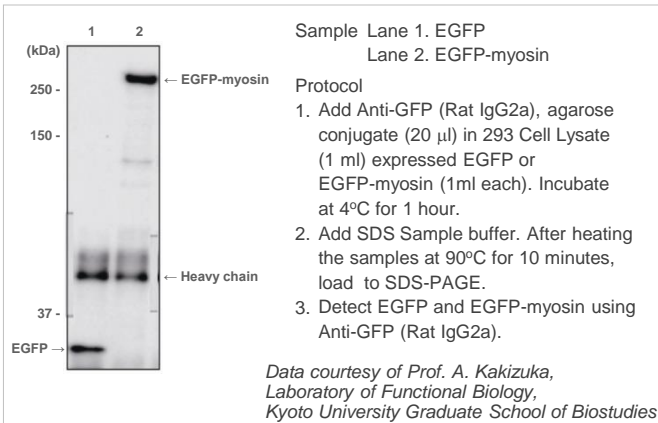
Reference

1. Yonehara, K. *Nature*. 469(7330):407-10 (2011)
2. Abe, K. et al. *Biol Reprod*. 85(5):1013-24 (2011)
3. Hide, T. et al. *Stem Cells*. 29(4):590-9 (2011)
4. Kurita, S. et al. *J Biol Chem*. 286(42):36297-303 (2011)
5. Wang, X. et al. *Glia*. 59(6):857-68 (2011)
6. Mochizuki, N. *Biol Pharm Bull*. 34(2):260-5 (2011)
7. Inamura, N. et al. *Dev Neurosci*. 33(2):118-29 (2011)
8. Vidaki, M. et al. *Cereb Cortex*. (2011)
9. Konno, A. et al. *Neurosci Res*. (2011)
10. Gotoh, H. et al. *Dev Biol*. 349(2):504-11 (2011)

Anti-GFP(Rat IgG2a), Mono (GF090R) Agarose Conjugate

Clone : GF090R
Isotype : IgG2a (Rat)
Product form : 1:1 suspension in Dulbecco's PBS(-)
Antibody protein : ca. 2 mg antibody/ml agarose

Immunoprecipitation



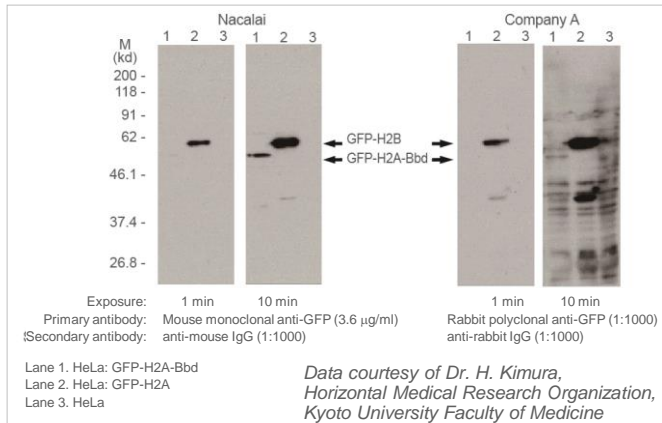
Reference

1. Kumeta, M. et al. *J Cell Sci*. 123(Pt 7): 1020-30 (2010)

Anti-GFP(Mouse IgG1-κ), Mono (GF200)

Clone : GF200
Isotype : IgG1-κ (Mouse)
Product form : Liquid
Immunogen : His-GFP (full length) fusion protein
Application : Western Blotting 1:1000-1:2000
ELISA 1:2000-1:20000

Western Blotting

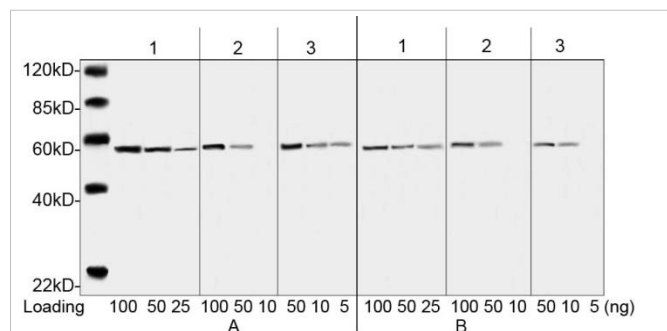


Anti-DYKDDDDK(Mouse IgG2b-κ), Mono

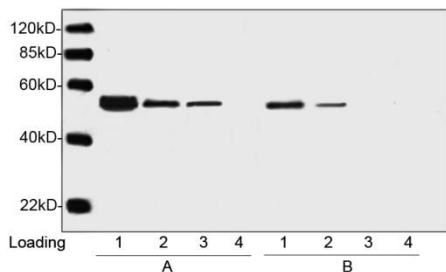
DYKDDDDK peptide is a small component of the epitope which does not appear to interfere with the bioactivity or the biodistribution of the recombinant protein. It has been used extensively as a general epitope tag in expression vectors. Anti-DYKDDDDK (Mouse IgG2b-κ) is a high-affinity monoclonal antibody that can bond to same epitope as Sigma's Anti-FLAG® M2 antibody.

Clone : 5A8E5
 Isotype : IgG2b-κ (Mouse)
 Product form : Lyophilized form
 Specificity : Anti-DYKDDDDK recognizes C-terminal, N-terminal and internal tagged fusion proteins.
 Concentration : 0.5 mg/ml, lyophilized with PBS, pH7.4, containing 0.02% sodium azide.
 Immunogen : A synthetic peptide (DYKDDDDK) coupled KLH
 Application : Western Blotting 0.1-1.0 μg/ml
 Immunoprecipitation 1 μg/ml
 Immunofluorescent 1 μg/ml
 ELISA 0.05-0.2 μg/ml

Comparison of Anti-DYKDDDDK(Mouse IgG2b-κ) with Mouse anti-DYKDDDDK Tag mAb (Company S, clone M2, 1 μg/ml) by Western blot.

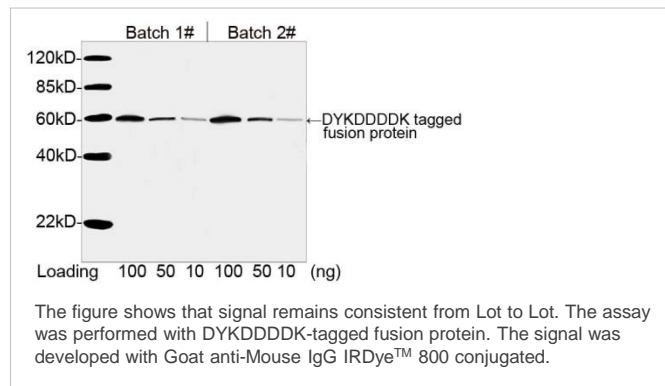


Sample : Lane 1. N-terminal DYKDDDDK-tagged fusion protein
 Lane 2. Internal DYKDDDDK-tagged fusion protein
 Lane 3. C-terminal DYKDDDDK-tagged fusion protein
 Primary Ab : A. Anti-DYKDDDDK(Mouse IgG2b-κ), Mono (5A8E5) 1 mg/ml
 B. Company S, Anti-DYKDDDDK Tag mAb (M2) 1 mg/ml
 Secondary Ab : Goat anti-Mouse IgG IRDye™ 800 Conjugated



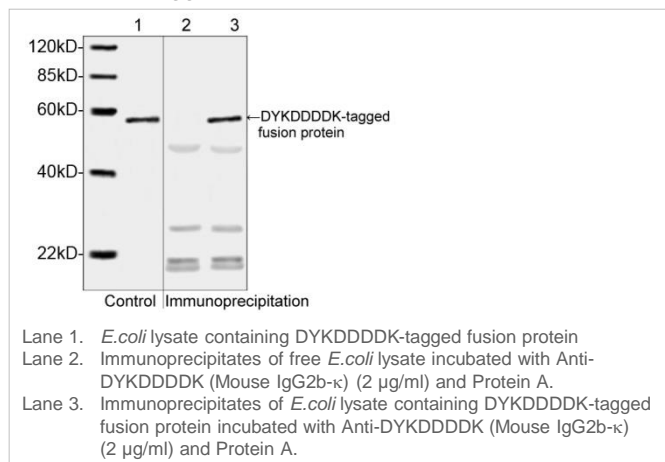
Sample : Lane 1-3. Multiple Tag (Purified) (400 ng, 80 ng, 16 ng)
 Lane 4. 293 cell lysate 10 ml
 Primary Ab : A. Anti-DYKDDDDK(Mouse IgG2b-κ), Mono (5A8E5) 1 mg/ml
 B. Company S, Anti-DYKDDDDK Tag mAb (M2) 1 mg/ml
 Secondary Ab : Goat anti-Mouse IgG IRDye™ 800 Conjugated

Consistent analysis of Batch 1# and Batch 2# of Anti-DYKDDDDK(Mouse IgG2b-κ) by Western Blotting.



The figure shows that signal remains consistent from Lot to Lot. The assay was performed with DYKDDDDK-tagged fusion protein. The signal was developed with Goat anti-Mouse IgG IRDye™ 800 conjugated.

Western Blotting analysis of *E. coli* lysate containing DYKDDDDK-tagged fusion protein and its immunoprecipitates.

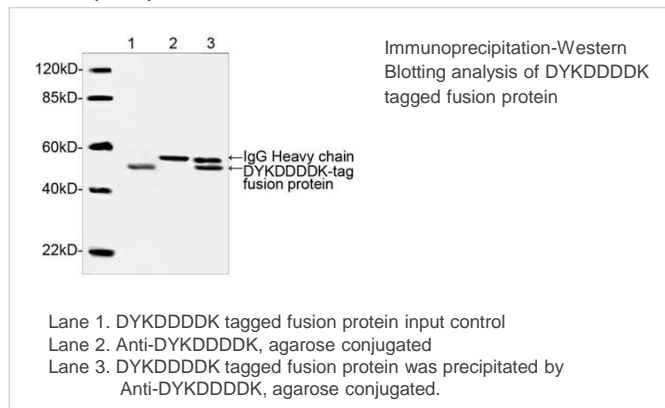


Lane 1. *E. coli* lysate containing DYKDDDDK-tagged fusion protein
 Lane 2. Immunoprecipitates of free *E. coli* lysate incubated with Anti-DYKDDDDK (Mouse IgG2b-κ) (2 μg/ml) and Protein A.
 Lane 3. Immunoprecipitates of *E. coli* lysate containing DYKDDDDK-tagged fusion protein incubated with Anti-DYKDDDDK (Mouse IgG2b-κ) (2 μg/ml) and Protein A.

Anti-DYKDDDDK(Mouse), Monoclonal Agarose Conjugate

Clone : 6H8E4
 Degree of substitution : Approx. 8.5 mg Anti-DYKDDDDK mAb/ml settled resin
 Capacity : > 1 mg/ml settled resin
 Product form : 1x PBS containing 50% glycerol

Immunoprecipitation



Lane 1. DYKDDDDK tagged fusion protein input control
 Lane 2. Anti-DYKDDDDK, agarose conjugated
 Lane 3. DYKDDDDK tagged fusion protein was precipitated by Anti-DYKDDDDK, agarose conjugated.

Anti-c-Myc(Mouse IgG1-κ), Mono (MC045)

Clone : MC045
 Isotype : IgG1-κ (Mouse)
 Product form : Liquid
 Immunogen : c-Myc synthetic peptide [EQKLISEEDL] conjugated with KLH
 Application : Western Blotting 1:1000-1:2000
 Immunoprecipitation 1:400-1:1000
 Immunocytochemistry 1:100-1:200
 ELISA 1:2000-1:20000

Immunocytochemistry



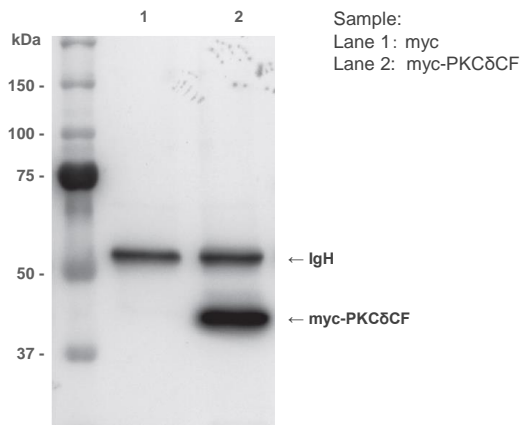
Sample : SH-SY5Y cell in which c-Myc-tagged TCP1β is expressed
 Primary Ab : Anti-c-Myc(Mouse IgG1-κ) (2.5 μg/ml)
 Anti-Protein X
 Secondary Ab : Anti-Fluor 546-conjugated antibody (1:400)
 Anti-Fluor 488-conjugated antibody (1:400)

Data courtesy of RIKEN Brain Science Institute

Anti-c-Myc(Mouse IgG1-κ), Mono (MC045) Agarose Conjugate

Clone : MC045
 Isotype : IgG1-κ (Mouse)
 Product form : 1:1 suspension in Dulbecco's PBS(-)
 Antibody protein : ca. 2 mg antibody/ml agarose

Immunocytochemistry

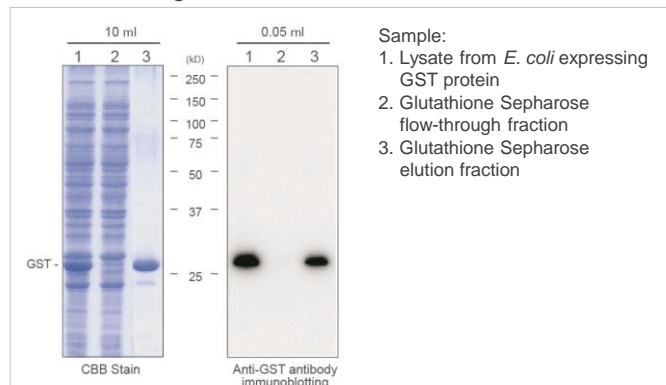


Immunoprecipitation : Anti-c-Myc(Mouse IgG1-κ), Agarose conjugate (1:500)
 Western Blotting : Anti-c-Myc(Mouse IgG1-κ)

Anti-GST(Mouse IgG2a-κ), Mono (GS019)

Clone : GS019
 Isotype : IgG2a-κ (Mouse)
 Product form : Liquid
 Immunogen : Glutathione-S-Transferase (GST)
 Application : Western Blotting 1:1000-1:2000
 Immunoprecipitation 1:400-1:1000
 ELISA 1:2000-1:20000

Western Blotting



Sample:
 1. Lysate from *E. coli* expressing GST protein
 2. Glutathione Sepharose flow-through fraction
 3. Glutathione Sepharose elution fraction

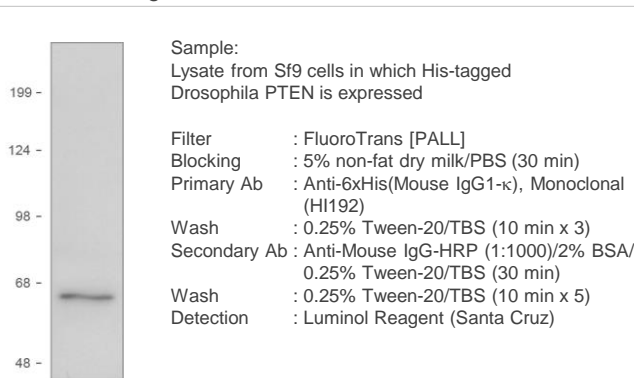
Gel : 12.5% SDS-PAGE
 Blocking : Blocking One (Nacalai Tesque), 1hr at RT
 Primary Ab : Anti-GST(Mouse) (1:2000 with Blocking One), 1hr at RT
 Wash : TBS-T (5 min x 3)
 Secondary Ab : Anti-Mouse Ig-HRP (1:1000 with TBS-T), 30 min at RT
 Wash : TBS-T (5 min x 3)
 Detection : Luminol Reagent (Santa Cruz)

*Data courtesy of Dr. Y. Shimizu
 The Institute of Medical Science, The University of Tokyo*

Anti-6xHis(Mouse IgG1a-κ), Mono (HI192)

Clone : HI192
 Isotype : IgG1a-κ (Mouse)
 Product form : Liquid
 Immunogen : 6xHis synthetic peptide [HHHHHH] conjugated with KLH
 Application : Western Blotting 1:1000-1:2000
 ELISA 1:2000-1:20000

Western Blotting



Sample:
 Lysate from Sf9 cells in which His-tagged Drosophila PTEN is expressed

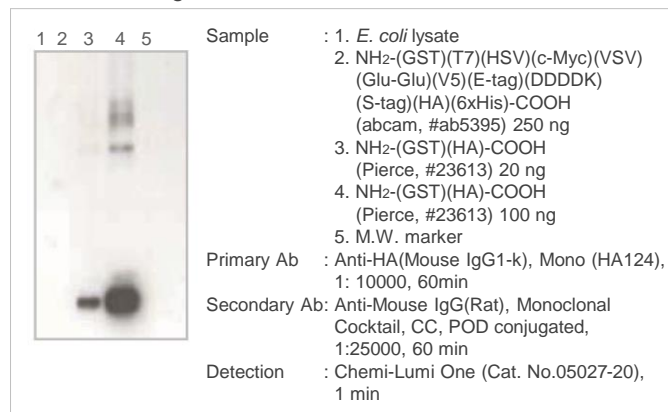
Filter : FluoroTrans [PALL]
 Blocking : 5% non-fat dry milk/PBS (30 min)
 Primary Ab : Anti-6xHis(Mouse IgG1-κ), Monoclonal (HI192)
 Wash : 0.25% Tween-20/TBS (10 min x 3)
 Secondary Ab : Anti-Mouse IgG-HRP (1:1000)/2% BSA/0.25% Tween-20/TBS (30 min)
 Wash : 0.25% Tween-20/TBS (10 min x 5)
 Detection : Luminol Reagent (Santa Cruz)

*Data courtesy of Dr. A. Maehama,
 The Tokyo Metropolitan Institute of Medical Science (RINSHOKEN)*

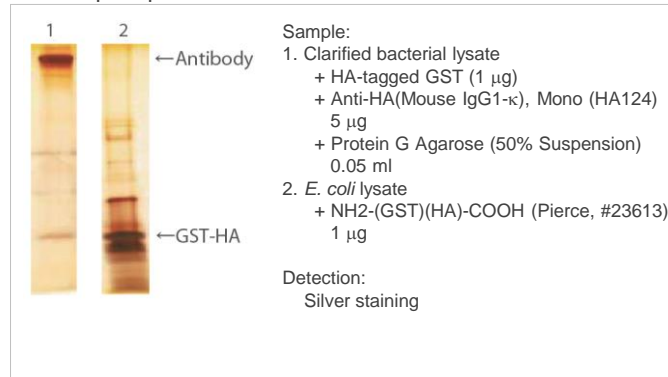
Anti-HA(Mouse IgG1 α - κ), Mono (HA124)

Clone : HA124
 Isotype : IgG1 α - κ (Mouse)
 Product form : Liquid
 Immunogen : Glutathione-S-Transferase(GST)-HA[YPYDVPDYA-COOH] fusion protein
 Application : Western Blotting 1:1000-1:2000
 ELISA 1:2000-1:20000

Western Blotting



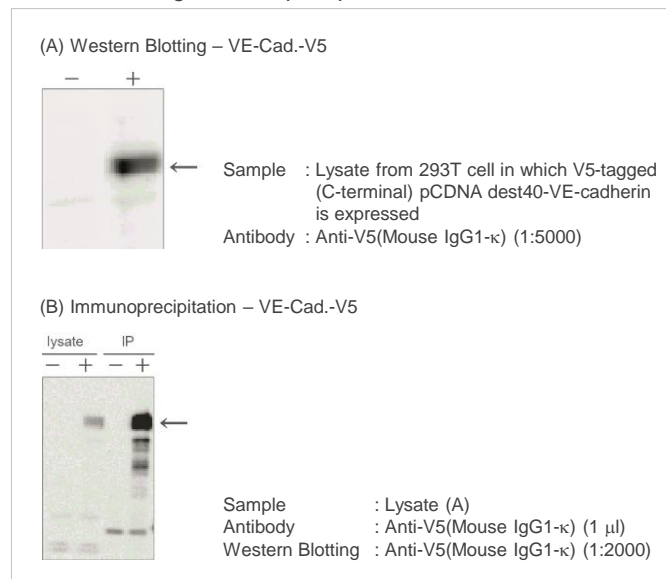
Immunoprecipitation



Anti-V5(Mouse IgG1- κ), Mono (V5005)

Clone : V5005
 Isotype : IgG1- κ (Mouse)
 Product form : Liquid
 Immunogen : V5 synthetic peptide [GKPIPPLLGLDST] conjugated with KLH
 Application : Western Blotting 1:1000-1:2000
 Immunoprecipitation 1:400-1:1000
 ELISA 1:2000-1:20000

Western Blotting, Immunoprecipitation



Ordering Information

Product Name	Storage	Cat. No.	Qty.	Price (US\$)
Anti-GFP (Rat IgG2a), Monoclonal (GF090R)	4°C	04404-84	200 μ g	410.00
Anti-GFP (Rat IgG2a), Monoclonal (GF090R), Agarose Conjugate	4°C	06083-05	500 μ g	483.00
Anti-GFP (Mouse IgG1- κ), Monoclonal (GF200)	4°C	04363-24	200 μ g	298.00
Anti-DYKDDDDK (Mouse IgG2b- κ), Monoclonal (5A8E5)	-20°C	NU01102	200 μ g	Inquiry
Anti-DYKDDDDK (Mouse), Monoclonal (6H8E4), Agarose Conjugate	-20°C	NU01103	1 ml	Inquiry
Anti-c-Myc (Mouse IgG1- κ), Monoclonal (MC045)	4°C	04362-34	200 μ g	298.00
Anti-c-Myc (Mouse IgG1- κ), Monoclonal (MC045), Agarose Conjugate	4°C	04145-55	500 μ g	364.00
Anti-GST (Mouse IgG2a- κ), Monoclonal (GS019)	4°C	04435-26	200 μ g	298.00
Anti-6xHis (Mouse IgG1- κ), Monoclonal (HI192)	4°C	04428-84	200 μ g	298.00
Anti-HA (Mouse IgG1- κ), Monoclonal (HA124)	4°C	06340-54	200 μ g	273.00
Anti-V5 (Mouse IgG1- κ), Monoclonal (V5005)	4°C	04434-36	200 μ g	298.00