

# His-Detect In-Gel Stain

Staining His-tagged fusion proteins

nacalai tesque

The quality for certainty.



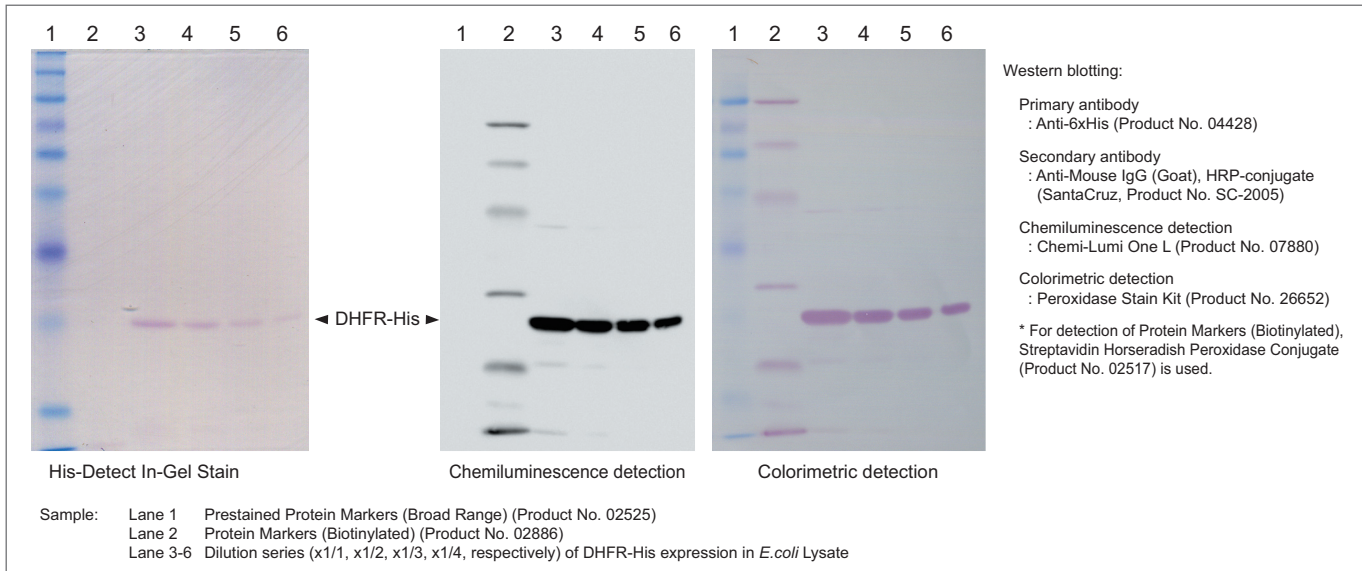
His-Detect In-Gel Stain is a ready-to-use staining reagent for visualizing His-tagged fusion protein directly in a polyacrylamide gel.

## Features

- Stain His-tagged fusion proteins directly in gels without western blotting
- Detect picomolar level of His-tagged fusion proteins within an hour
- No fluorescent image analyzer or transilluminator required

\*\* His-Detect In-Gel Stain detects coordinated cobalt in His-tag. If a sample contains other metal-binding proteins, non-specific bands may occur depending on the sample.

## Application data - Comparison with western blotting



## Procedure comparison - Using His-Detect In-Gel Stain vs. conventional western blotting

	His-Detect In-Gel Stain	Western blotting
Number of steps (except washing)	1 step	5 steps 1. Transfer 2. Blocking 3. Primary antibody reaction 4. Secondary antibody reaction 5. Detection
Time	60 minutes or less	300 minutes or more

## Ordering information

Product name	Grade	Storage	Product number	PKG size
His-Detect In-Gel Stain	SP	RT	08500-65	500 ML

For research use only, not intended for diagnostic or drug use.

## NACALAI TESQUE, INC.

Nijo Karasuma, Nakagyo-ku, Kyoto 604-0855, JAPAN

TEL: +81-75-251-1730

FAX: +81-75-251-1763

Website: <http://www.nacalai.com>

E-mail: [info.intl@nacalai.co.jp](mailto:info.intl@nacalai.co.jp)