

# Hyper Filter Tips

## Hyper filter prevents liquid overflow!

Watson's "Hyper-Filter tip" adopts a special hydrophobic porous filter to prevent overflow caused by human errors.

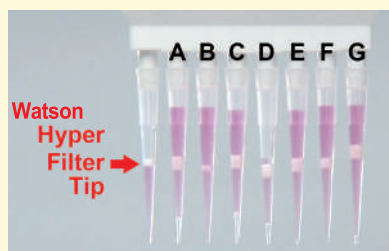
Hyper Filter fits and seals tightly

### Features of Hyper-Filter

#### 1. Decreasing elution from the filter

Hyper-Filter has excellent chemical resistance, thus the sample which has been erroneously over-aspirated and touched the filter can be re-used in safety.

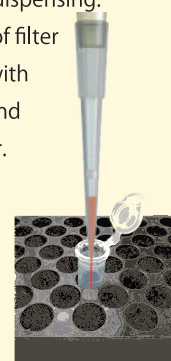
#### 2. Stop sample overflow and contamination



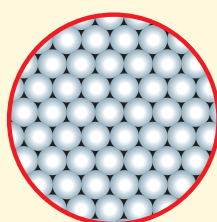
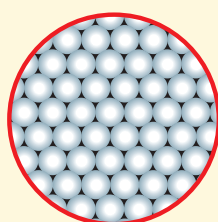
In a comparison of Watson's Hyper-Filter Tips with other brands (when aspirating 60  $\mu$ L with 20  $\mu$ L filter tip), Watson brand Hyper-Filter tip completely prevents the sample overflow due to our highly dense filter in one minute after the solution has been absorbed.

#### 3. Easy sample collection

The sample can be collected after aspirating the sample right up to the filter and dispensing. The particles of filter do not swell with the solution and block the filter.



#### Watson HYPER-FILTER



Conventional Hyper Filter particles, once the sample touched the filter, expand and block in the holes of the filter to prevent overflow. These samples cannot be collected once dispensed.

Hyper-Filter can stop the liquid firmly but don't close the hole completely when it comes into contact with the sample excessively aspirated.

Hyper-Filter is dense enough to prevent overflow, however maintains the holes in the filter.