



# Removal

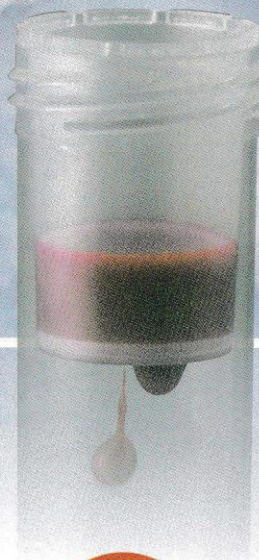
**For removal of Leukocyte**

**You can remove  
leukocyte  
only by filtering!**

**Easy-to-Use  
Column Type**

**Just Fit to  
50ml  
Centrifuge Tubes**

※There are some centrifuge  
tubes that does not fit.



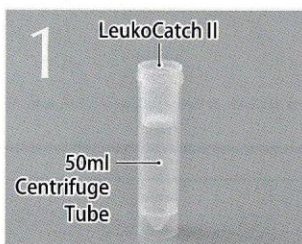
## LeukoCatch® II



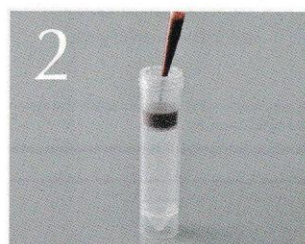
Leukofilter

Cat. No.	Item	Packaging
1883-110LC	LeukoCatch II Column Type	5pcs.

### PROTOCOL

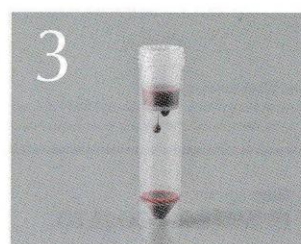


Fit Leuko Catch II on a 50ml  
Centrifuge Tube.



Pipette a blood sample.

<Recommended formula>  
Whole blood 5ml + PBS 5ml  
**Total 10ml**



Filter the sample.

<Example>  
In case of 10 ml blood sample  
diluted two fold.  
**Filtering time is approx.  
10mins.**



Leuko Filter traps leukocytes  
and leukocytes are removed  
from the filtrate.



# You can remove leukocyte only by filtering!

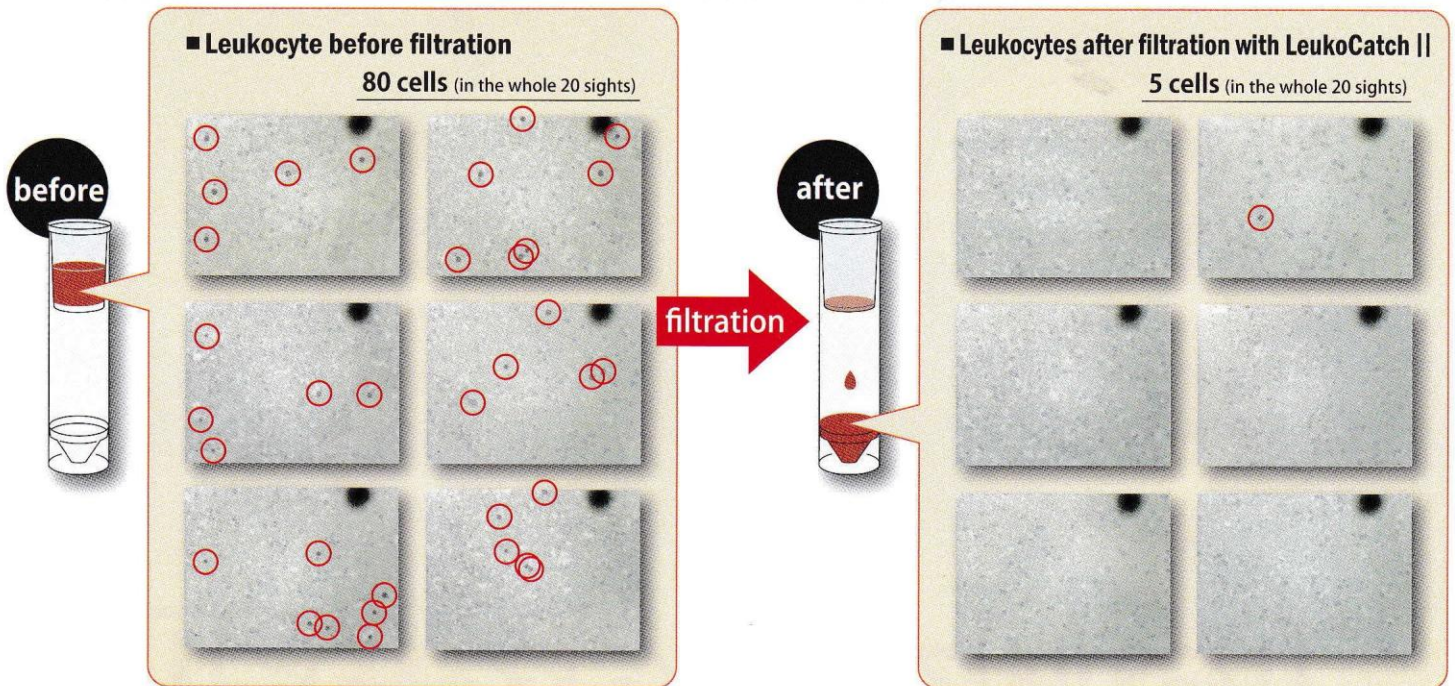
Leuko filter traps leukocytes specifically.

The filter removes leukocytes from a whole blood.

## The leukocyte count after filtration by LeukoCatch II

6 examples from 20 sights randomly obtained from observation of a mouse blood.

\* Data provider : Mie University, Faculty of Medicine, The Laboratory of Medical Zoology



## LeukoCatch II Q&A

**Q.** Is it possible to use a whole blood as it is without dilution?

**A.** It is possible but filtration time is much longer. Also it causes clog on the porous filter much quicker, thus operation efficiency may drop. It is suggested that a whole blood be diluted 2-3 fold with PBS.

**Q.** Is it possible to collect leukocytes with LeukoCatch II?

**A.** A protocol for that purpose has not been established at this moment and it is under development.

**Q.** Is it possible to use a animal blood?

**A.** A blood from different animals may cause difference in the results. Please try with a sample product first. Our in-house evaluation is conducted with human and mouse bloods.

**Q.** Is there any tendency in the efficiency of leukocyte removal due to the types or sizes of a leukocyte?

**A.** Basically, the types or sizes do not affect the efficiency and uniform results can be obtained. There is not a case where, for example, only lymphocytes are left unremoved.

Note: As cited from an article in *Advances in Bioscience and Biotechnology*, 2012.

"Nevertheless, these leukocyte separation procedures require laboratory-based professional and time-consuming procedures using instrumentation that is not routinely available at the bedside or in a common clinical facility. Moreover, their protocols are too complex to apply to an automated machine to treat hundreds of samples simultaneously."

Something Different.

**WATSON** BIO LAB  
MADE IN JAPAN SINCE 1988

<http://watsonbiolab.com>

Sales agency:

**WATSON CO., LTD.**

Export Division:

2-2-7, Murotani Nishi-ku Kobe, 651-2241 JAPAN  
TEL 81-78-991-4489 FAX 81-78-991-4491

Head Office:

3-37-22, Kanda-Sakumacho Chiyoda-ku Tokyo,  
101-0025 JAPAN  
TEL 81-3-5823-8608 FAX 81-3-5823-8609

E-mail:

[tcr@watson.co.jp](mailto:tcr@watson.co.jp)

Manufacturer:

**FUKAEKASEI** CO., LTD.

※The specification and the price etc. of the product might change without a previous notice.