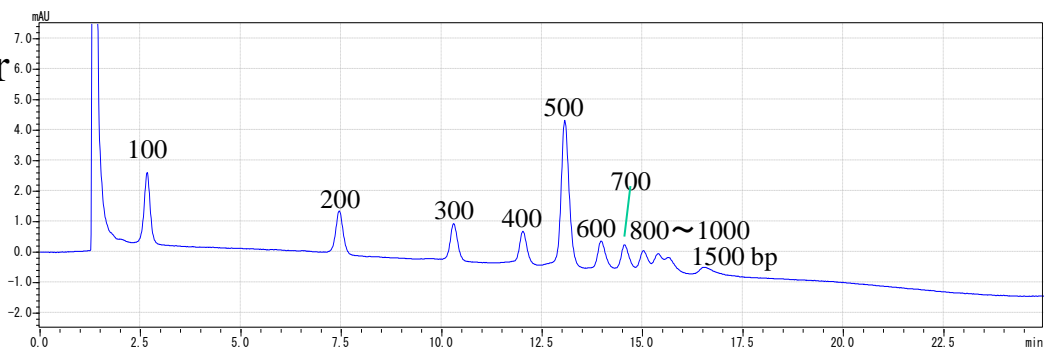


COSMOSIL Application Data

Column: COSMOSIL RNA-RP1
Column size: 4.6 mm I.D.-100 mm
Mobile phase: A; 100 mmol/L Triethylamine, 100 mmol/L Acetic Acid (pH7)
B; Acetonitrile
B conc. 12→18 % (0→20 min), 18 % (20-25 min)
Flow rate: 1.0 ml/min
Temperature: 40 °C
Detection: UV260 nm

Sample: 100 bp DNA Ladder
(130 ng/μl)
Inj. Vol: 5.0 μl



NACALAI TESQUE, INC

COSMOSIL Application Data

Column: COSMOSIL RNA-RP1

Column size: 4.6 mm I.D.-100 mm

Mobile phase: A; 100 mmol/L Triethylamine, 100 mmol/L Acetic Acid (pH7)
B; Acetonitrile

B conc. 11→16 % (0→20 min), 16 % (20-25 min)

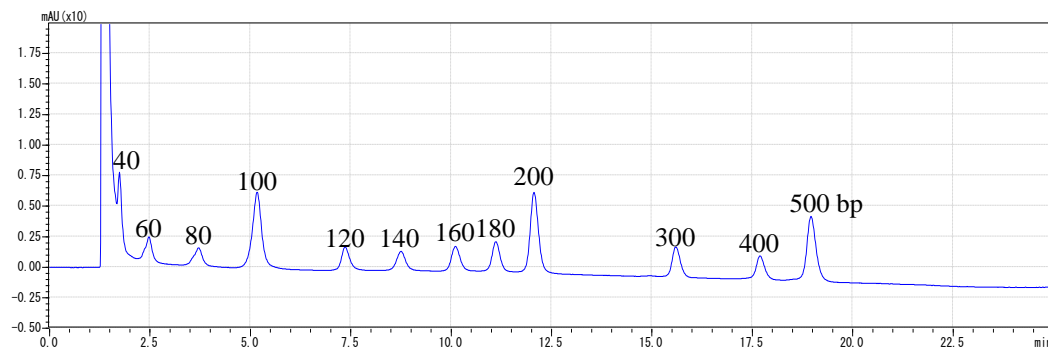
Flow rate: 1.0 ml/min

Temperature: 40 °C

Detection: UV260 nm

Sample: 20 bp DNA Ladder
(200 ng/μl)

Inj. Vol: 5.0 μl



NACALAI TESQUE, INC

COSMOSIL Application Data

Column: COSMOSIL RNA-RP1

Column size: 4.6 mm I.D.-100 mm

Mobile phase: A; 100 mmol/L Triethylamine, 100 mmol/L Acetic Acid (pH7)
B; Acetonitrile

B conc. 12→17 % (0→20 min), 17 % (20-25 min)

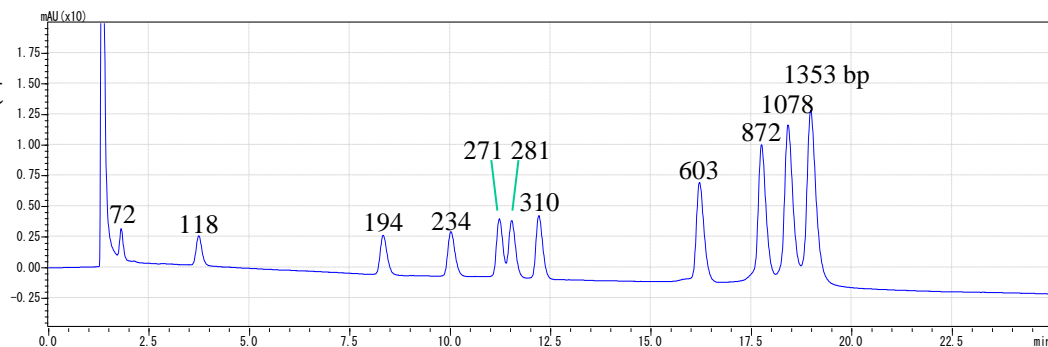
Flow rate: 1.0 ml/min

Temperature: 40 °C

Detection: UV260 nm

Sample: Φ X174/*Hae*III digest
(200 ng/ μ l)

Inj. Vol: 5.0 μ l



NACALAI TESQUE, INC

COSMOSIL Application Data

Column: COSMOSIL RNA-RP1

Column size: 4.6 mm I.D.-100 mm

Mobile phase: A; 100 mmol/L Triethylamine, 100 mmol/L Acetic Acid (pH7)
B; Acetonitrile

B conc. 12→17 % (0→20 min), 17 % (20-25 min)

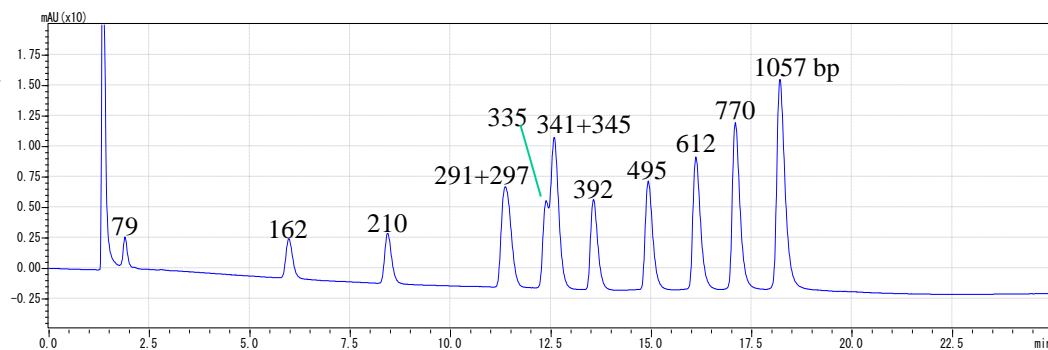
Flow rate: 1.0 ml/min

Temperature: 40 °C

Detection: UV260 nm

Sample: Φ X174/*HincII* digest
(200 ng/ μ l)

Inj. Vol: 5.0 μ l



NACALAI TESQUE, INC

COSMOSIL Application Data

Column: COSMOSIL RNA-RP1

Column size: 4.6 mm I.D.-100 mm

Mobile phase: A; 100 mmol/L Triethylamine, 100 mmol/L Acetic Acid (pH7)
B; Acetonitrile

B conc. 10→17 % (0→20 min), 17 % (20-25 min)

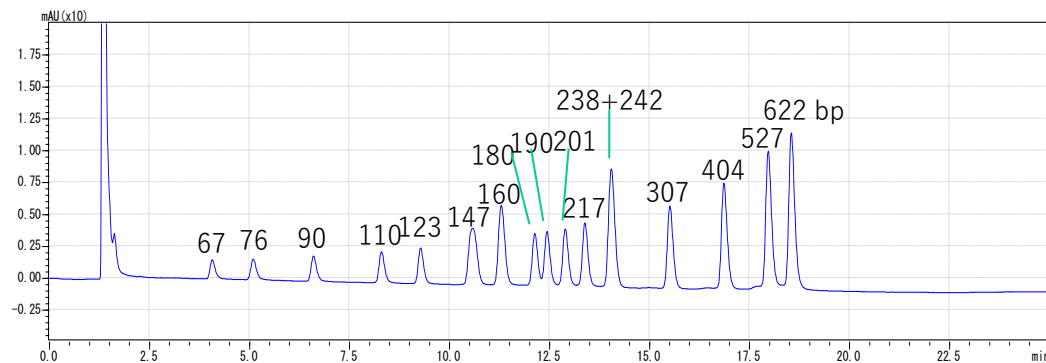
Flow rate: 1.0 ml/min

Temperature: 40 °C

Detection: UV260 nm

Sample: pBR322/*Msp*I digest
(200 ng/μl)

Inj. Vol: 5.0 μl



NACALAI TESQUE, INC

COSMOSIL Application Data

Column: COSMOSIL RNA-RP1

Column size: 4.6 mm I.D.-100 mm

Mobile phase: A; 100 mmol/L Triethylamine, 100 mmol/L Acetic Acid (pH7)
B; Acetonitrile

B conc. 5→20 % (0→20 min), 20 % (20-24 min)

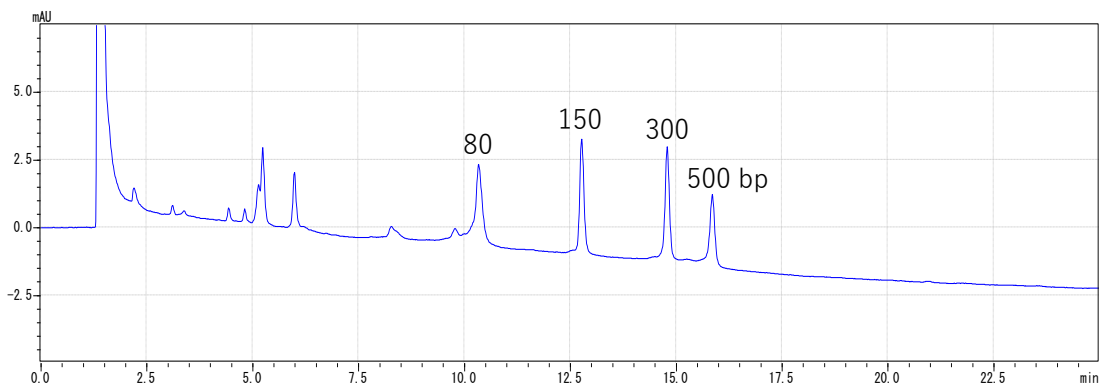
Flow rate: 1.0 ml/min

Temperature: 40 °C

Detection: UV260 nm

Sample: dsRNA Ladder
(200 ng/μl)

Inj. Vol: 5.0 μl



NACALAI TESQUE, INC

COSMOSIL Application Data

Column: COSMOSIL RNA-RP1

Column size: 4.6 mm I.D.-100 mm

Mobile phase: A; 100 mmol/L Triethylamine, 100 mmol/L Acetic Acid (pH7)
B; Acetonitrile

B conc. 5→20 % (0→20 min), 20 % (20-24 min)

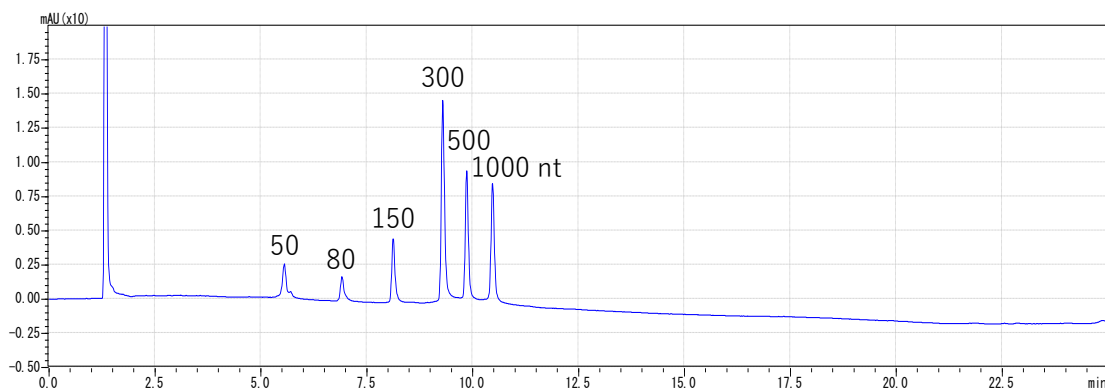
Flow rate: 1.0 ml/min

Temperature: 65 °C

Detection: UV260 nm

Sample: ssRNA Ladder,
Low Range
(200 ng/μl)

Inj. Vol: 5.0 μl

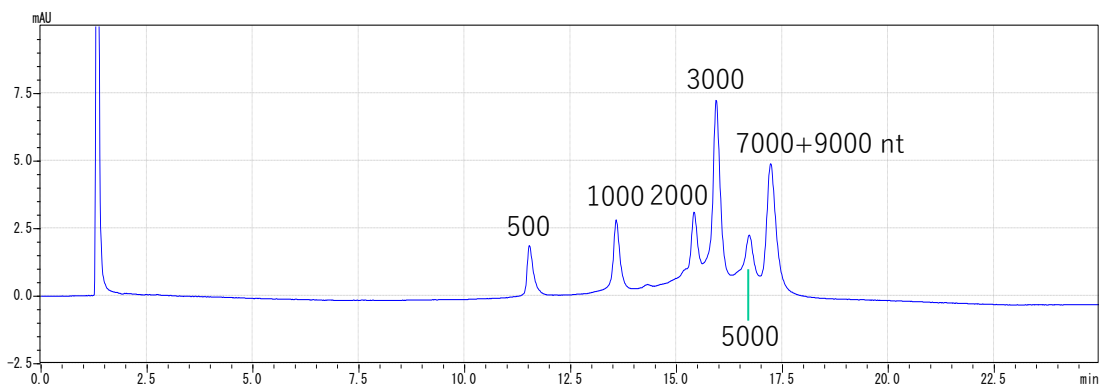


NACALAI TESQUE, INC

COSMOSIL Application Data

Column: COSMOSIL RNA-RP1
Column size: 4.6 mm I.D.-100 mm
Mobile phase: A; 100 mmol/L Triethylamine, 100 mmol/L Acetic Acid (pH7)
B; Acetonitrile
B conc. 8→13 % (0→20 min), 13 % (20-24 min)
Flow rate: 1.0 ml/min
Temperature: 65 °C
Detection: UV260 nm

Sample: ssRNA Ladder
(200 ng/μl)
Inj. Vol: 5.0 μl



NACALAI TESQUE, INC

COSMOSIL Application Data

Column: COSMOSIL RNA-RP1

Column size: 4.6 mm I.D.-100 mm

Mobile phase: A; 100 mmol/L Triethylamine, 100 mmol/L Acetic Acid (pH7)
B; Acetonitrile

B conc. 5→13 % (0→20 min), 13 % (20-24 min)

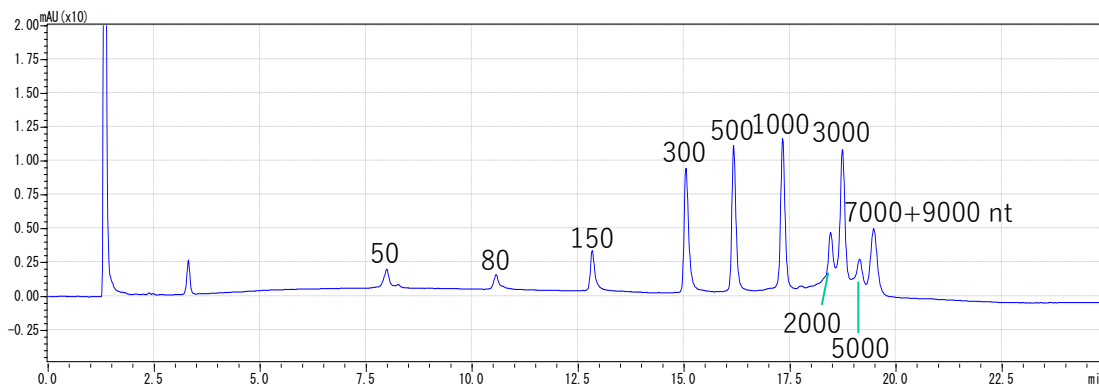
Flow rate: 1.0 ml/min

Temperature: 65 °C

Detection: UV260 nm

Sample: ssRNA Ladder,
mixture

Inj. Vol: 4.0 µl



NACALAI TESQUE, INC